

# TNFR1/CD120a Monoclonal Matched Antibody Pair, PBS Only

Catalog Number: **MP50042-1**

## Capture Antibody Information

<b>Catalog Number:</b> 68685-1-PBS	<b>Clone ID:</b> 1E3E4	<b>Conjugate:</b> Unconjugated
<b>Host:</b> Mouse	<b>Reactivity:</b> human	<b>Full name:</b> tumor necrosis factor receptor superfamily, member 1A
<b>Isotype:</b> IgG2a	<b>GenBank:</b> BC010140	<b>Gene ID:</b> 7132
<b>Purification Method:</b> Protein A purification	<b>Immunogen Catalog Number:</b> Eg0531	

## Detection Antibody Information

<b>Catalog Number:</b> 68685-2-PBS	<b>Clone ID:</b> 1D12C3	<b>Conjugate:</b> Unconjugated
<b>Host:</b> Mouse	<b>Reactivity:</b> human	<b>Full name:</b> tumor necrosis factor receptor superfamily, member 1A
<b>Isotype:</b> IgG1	<b>GenBank:</b> BC010140	<b>Gene ID:</b> 7132
<b>Purification Method:</b> Protein A purification	<b>Immunogen Catalog Number:</b> Eg0531	

## Applications

<b>Tested Applications:</b> Sandwich ELISA	<b>Range:</b> 7.8-500 pg/mL (Sandwich ELISA)	<b>Recommended Dilutions:</b> It is recommended that this reagent should be titrated in each testing system to obtain optimal results.
---	---	---

## Product Information

MP50042-1 targets TNFR1/CD120a in immunoassays as a matched antibody pair. Validated in Sandwich ELISA.

Capture antibody: TNFR1/CD120a Monoclonal antibody, PBS Only (Capture) 68685-1-PBS (1E3E4). 100 µg. Concentration 1 mg/mL.

Detection antibody: TNFR1/CD120a Monoclonal antibody, PBS Only (Detector) 68685-2-PBS (1D12C3). 100 µg. Concentration 1 mg/mL.

Unconjugated mouse monoclonal antibody pair in PBS only storage buffer at a concentration of 1 mg/mL, ready for conjugation.

Matched antibody pairs are designed for use in a variety of assays and platforms that require matched antibody pairs.

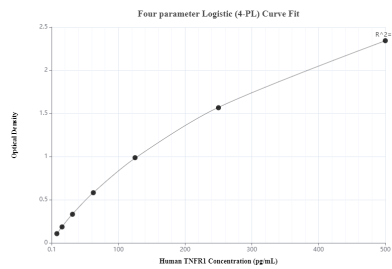
Antibody use should be optimized for each application and assay.

## Storage

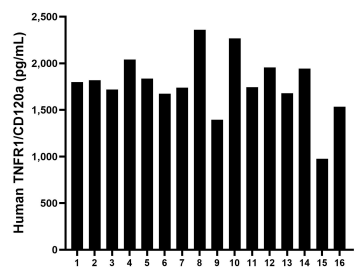
**Storage:**  
Store at -80°C.  
**The product is shipped with ice packs. Upon receipt, store it immediately at -80°C**

**Storage buffer:**  
PBS only

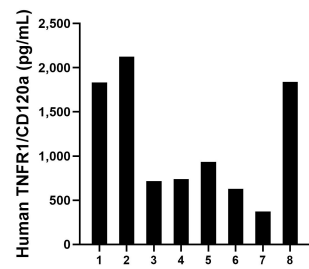
## Selected Validation Data



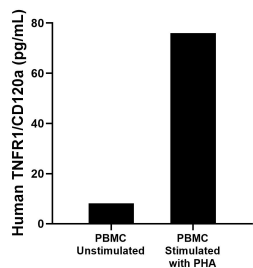
Sandwich ELISA standard curve of MP50042-1, TNFR1/CD120a Monoclonal Matched Antibody Pair, PBS Only. Capture antibody: 68685-1-PBS. Detection antibody: 68685-2-PBS. Standard: Eg0531. Range: 7.8-500 pg/mL



Serum of sixteen individual healthy human donors was measured. The TNFR1/CD120a concentration of detected samples was determined to be 1,779.9 pg/mL with a range of 976.2-2,358.9 pg/mL



Urine of eight individual healthy human donors was measured. The TNFR1/CD120a concentration of detected samples was determined to be 1,147.7 pg/mL with a range of 373.1-2,123.2 pg/mL



Human peripheral blood mononuclear cells (PBMC) were cultured unstimulated or stimulated with 10  $\mu$ g/mL PHA for 3 days. The mean TNFR1/CD120a concentration was determined to be 8.1 pg/mL in unstimulated PBMC supernatant, 76.0 pg/mL in PHA stimulated PBMC supernatant.