

ANGPTL4 Monoclonal Matched Antibody Pair, PBS Only

Catalog Number: **MP50037-1**

Capture Antibody Information

Catalog Number: 67577-2-PBS	Clone ID: 2C7A2	Conjugate: Unconjugated
Host: Mouse	Reactivity: human	Full name: angiopoietin-like 4
Isotype: IgG1	GenBank: BC023647	Gene ID: 51129
Purification Method: Protein G purification	Immunogen Catalog Number: Ag30070	

Detection Antibody Information

Catalog Number: 67577-3-PBS	Clone ID: 2D9B9	Conjugate: Unconjugated
Host: Mouse	Reactivity: human	Full name: angiopoietin-like 4
Isotype: IgG2b	GenBank: BC023647	Gene ID: 51129
Purification Method: Protein A purification	Immunogen Catalog Number: Ag30070	

Applications

Tested Applications: Sandwich ELISA	Range: 0.313-20 ng/mL (Sandwich ELISA)	Recommended Dilutions: It is recommended that this reagent should be titrated in each testing system to obtain optimal results.
--	---	--

Product Information

MP50037-1 targets ANGPTL4 in immunoassays as a matched antibody pair. Validated in Sandwich ELISA.

Capture antibody: ANGPTL4 Monoclonal antibody, PBS Only (Capture) 67577-2-PBS (2C7A2). 100 µg. Concentration 1 mg/mL.

Detection antibody: ANGPTL4 Monoclonal antibody, PBS Only (Detector) 67577-3-PBS (2D9B9). 100 µg. Concentration 1 mg/mL.

Unconjugated mouse monoclonal antibody pair in PBS only storage buffer at a concentration of 1 mg/mL, ready for conjugation.

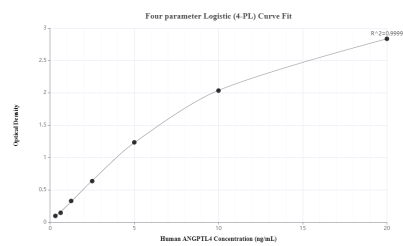
Matched antibody pairs are designed for use in a variety of assays and platforms that require matched antibody pairs.

Antibody use should be optimized for each application and assay.

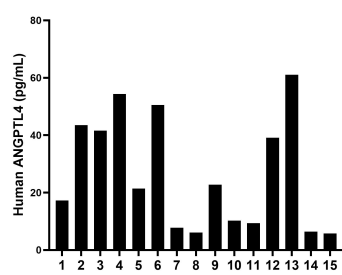
Storage

Storage:
Store at -80°C.
The product is shipped with ice packs. Upon receipt, store it immediately at -80°C
Storage buffer:
PBS only

Selected Validation Data



Sandwich ELISA standard curve of MP50037-1, ANGPTL4 Monoclonal Matched Antibody Pair, PBS Only. Capture antibody: 67577-2-PBS. Detection antibody: 67577-3-PBS. Standard: Ag30070. Range: 0.313-20 ng/mL.



Serum of fifteen individual healthy human donors was measured. The ANGPTL4 concentration of detected samples was determined to be 26.48 pg/mL with a range of 5.75-61.08 pg/mL.