

# Haptoglobin Monoclonal Matched Antibody Pair, PBS Only

Catalog Number: MP50036-1

## Capture Antibody Information

Catalog Number:  
68682-1-PBS  
Host:  
Mouse  
Isotype:  
IgG1  
Purification Method:  
Protein G purification

Clone ID:  
1E1F4  
Reactivity:  
human  
GenBank:  
BC121125  
Immunogen Catalog Number:  
Eg0445

Conjugate:  
Unconjugated  
Full name:  
haptoglobin  
Gene ID:  
3240

## Detection Antibody Information

Catalog Number:  
68682-2-PBS  
Host:  
Mouse  
Isotype:  
IgG2b  
Purification Method:  
Protein A purification

Clone ID:  
3B3G4  
Reactivity:  
human  
GenBank:  
BC121125  
Immunogen Catalog Number:  
Eg0445

Conjugate:  
Unconjugated  
Full name:  
haptoglobin  
Gene ID:  
3240

## Applications

Tested Applications:  
Sandwich ELISA

Range:  
62.5-4000 pg/mL (Sandwich ELISA)

Recommended Dilutions:  
It is recommended that this reagent should be titrated in each testing system to obtain optimal results.

## Product Information

MP50036-1 targets Haptoglobin in immunoassays as a matched antibody pair. Validated in Sandwich ELISA.

Capture antibody: HP Monoclonal antibody, PBS Only (Capture) 68682-1-PBS (1E1F4). 100 µg. Concentration 1 mg/mL.

Detection antibody: HP Monoclonal antibody, PBS Only (Detector) 68682-2-PBS (3B3G4). 100 µg. Concentration 1 mg/mL.

Unconjugated mouse monoclonal antibody pair in PBS only storage buffer at a concentration of 1 mg/mL, ready for conjugation.

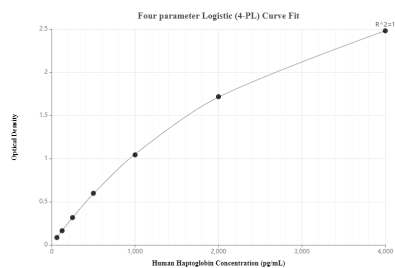
Matched antibody pairs are designed for use in a variety of assays and platforms that require matched antibody pairs.

Antibody use should be optimized for each application and assay.

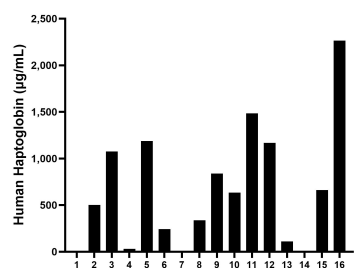
## Storage

Storage:  
Store at -80°C.  
The product is shipped with ice packs. Upon receipt, store it immediately at -80°C  
Storage buffer:  
PBS only

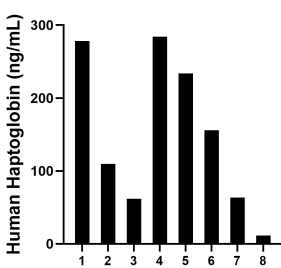
## Selected Validation Data



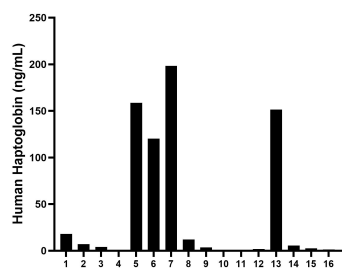
Sandwich ELISA standard curve of MP50036-1, Haptoglobin Monoclonal Matched Antibody Pair, PBS Only. Capture antibody: 68682-1-PBS. Detection antibody: 68682-2-PBS. Standard: Eg0445. Range: 62.5-4000 pg/mL



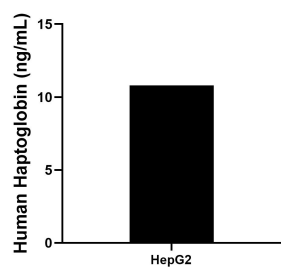
Serum of sixteen individual healthy human donors was measured. The Haptoglobin concentration of detected samples was determined to be 658.6 µg/mL with a range of 0.6 -2,265.0 µg/mL



Saliva of eight individual healthy human donors was measured. The Haptoglobin concentration of detected samples was determined to be 149.8 ng/mL with a range of 11.6-284.1 ng/mL



Urine of sixteen individual healthy human donors was measured. The Haptoglobin concentration of detected samples was determined to be 42.8 ng/mL with a range of 0.2-198.3 ng/mL



HepG2 cells were cultured in serum-free DMEM supplemented with 2.5 mM L-glutamine, 100 U/mL penicillin, and 100 µg/mL streptomycin sulfate. An aliquot of the cell culture supernate was removed at 3 days, assayed for human Haptoglobin, and measured 10.8 ng/mL