

# M-CSF Monoclonal Matched Antibody Pair, PBS Only

Catalog Number: MP50033-1

## Capture Antibody Information

**Catalog Number:**  
69033-1-PBS

**Host:**  
Mouse

**Isotype:**  
IgG1

**Purification Method:**  
Protein G purification

**Clone ID:**  
4C6C5

**Reactivity:**  
human

**GenBank:**

**Immunogen Catalog Number:**  
HZ-1192

**Conjugate:**  
Unconjugated

**Full name:**  
colony stimulating factor 1 (macrophage)

**Gene ID:**  
1435

**Affinity:**  
 $K_D = 8.48 \times 10^{-9}$   
 $K_{off} = 4.75 \times 10^{-4}$   
 $K_{on} = 5.60 \times 10^4$

## Detection Antibody Information

**Catalog Number:**  
68662-1-PBS

**Host:**  
Mouse

**Isotype:**  
IgG1

**Purification Method:**  
Protein G purification

**Clone ID:**  
2C3B4

**Reactivity:**  
human

**GenBank:**

**Immunogen Catalog Number:**  
HZ-1192

**Conjugate:**  
Unconjugated

**Full name:**  
colony stimulating factor 1 (macrophage)

**Gene ID:**  
1435

**Affinity:**  
 $K_D = 9.64 \times 10^{-10}$   
 $K_{off} = 8.75 \times 10^{-5}$   
 $K_{on} = 9.08 \times 10^4$

## Applications

**Tested Applications:**  
Sandwich ELISA

**Range:**  
15.6-1000 pg/mL (Sandwich ELISA)

**Recommended Dilutions:**  
It is recommended that this reagent should be titrated in each testing system to obtain optimal results.

## Product Information

MP50033-1 targets M-CSF in immunoassays as a matched antibody pair. Validated in Sandwich ELISA.

Capture antibody: NeutraKine® M-CSF Monoclonal antibody, PBS Only (Capture) 69033-1-PBS (4C6C5). 100 µg. Concentration 1 mg/mL.

Detection antibody: M-CSF Monoclonal antibody, PBS Only (Detector) 68662-1-PBS (2C3B4). 100 µg. Concentration 1 mg/mL.

Unconjugated mouse monoclonal antibody pair in PBS only storage buffer at a concentration of 1 mg/mL, ready for conjugation.

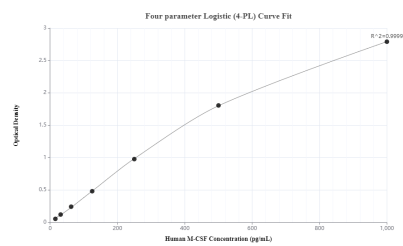
Matched antibody pairs are designed for use in a variety of assays and platforms that require matched antibody pairs.

Antibody use should be optimized for each application and assay.

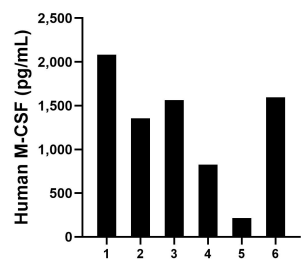
## Storage

**Storage:**  
Store at -80°C.  
**The product is shipped with ice packs. Upon receipt, store it immediately at -80°C**  
**Storage buffer:**  
PBS only

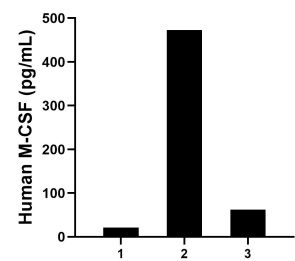
## Selected Validation Data



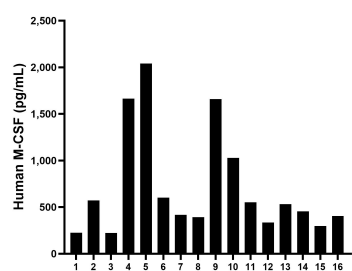
Sandwich ELISA standard curve of MP50033-1, MCSF Monoclonal Matched Antibody Pair - PBS Only. 69033-1-PBS was coated to a plate as the capture antibody and incubated with serial dilutions of standard HZ-1192. 68662-1-PBS was HRP conjugated as the detection antibody. Range: 15.6-1000 pg/mL.



Urine of six individual healthy human donors was measured. The M-CSF concentration of detected samples was determined to be 1,272.6 pg/mL with a range of 216.3-2,082.1 pg/mL.



Saliva of three individual healthy human donors was measured. The M-CSF concentration of detected samples was determined to be 185.5 pg/mL with a range of 21.3-473.0 pg/mL.



Serum of sixteen individual healthy human donors was measured. The M-CSF concentration of detected samples was determined to be 712.6 pg/mL with a range of 223.9-2,041.6 pg/mL.