

Albumin Monoclonal Matched Antibody Pair, PBS Only

Catalog Number: **MP50031-1**

Capture Antibody Information

Catalog Number:
66051-2-PBS
Host:
Mouse
Isotype:
IgG1
Purification Method:
Protein G purification

Clone ID:
5E6B5
Reactivity:
human
GenBank:
BC034023
Immunogen Catalog Number:
Ag9885

Conjugate:
Unconjugated
Full name:
albumin
Gene ID:
213

Detection Antibody Information

Catalog Number:
66051-1-PBS
Host:
Mouse
Isotype:
IgG1
Purification Method:
Protein G purification

Clone ID:
4A1C11
Reactivity:
human, rat, pig
GenBank:
BC034023
Immunogen Catalog Number:
Ag9885

Conjugate:
Unconjugated
Full name:
albumin
Gene ID:
213

Applications

Tested Applications:
Sandwich ELISA

Range:
50-3200 ng/mL (Sandwich ELISA)

Recommended Dilutions:
It is recommended that this reagent should be titrated in each testing system to obtain optimal results.

Product Information

MP50031-1 targets Albumin in immunoassays as a matched antibody pair. Validated in Sandwich ELISA.

Capture antibody: Albumin Monoclonal antibody, PBS Only (Capture) 66051-2-PBS (5E6B5). 100 µg. Concentration 1 mg/mL.

Detection antibody: Albumin Monoclonal antibody, PBS Only (Detector) 66051-1-PBS (4A1C11). 100 µg. Concentration 1 mg/mL.

Unconjugated mouse monoclonal antibody pair in PBS only storage buffer at a concentration of 1 mg/mL, ready for conjugation.

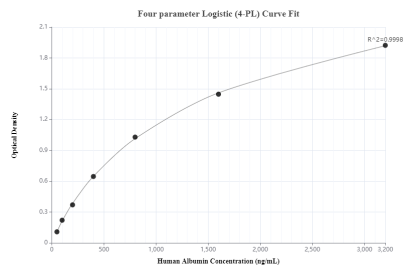
Matched antibody pairs are designed for use in a variety of assays and platforms that require matched antibody pairs.

Antibody use should be optimized for each application and assay.

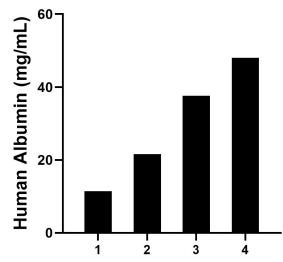
Storage

Storage:
Store at -80°C.
The product is shipped with ice packs. Upon receipt, store it immediately at -80°C
Storage buffer:
PBS only

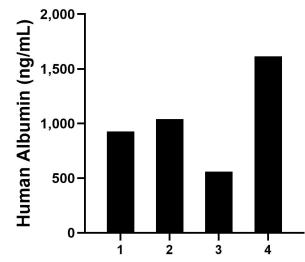
Selected Validation Data



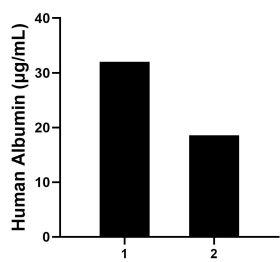
Sandwich ELISA standard curve of MP50031-1, Albumin Monoclonal Matched Antibody Pair, PBS Only. Capture antibody: 66051-2-PBS. Detection antibody: 66051-1-PBS. Standard: Ag9885. Range: 50-3200 ng/mL



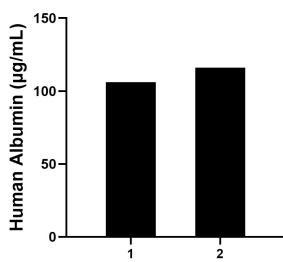
Serum of four individual healthy human donors was measured. The Albumin concentration of detected samples was determined to be 29.65 mg/mL with a range of 11.40-48.00 mg/mL



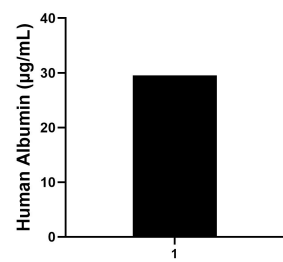
Urine of four individual healthy human donors was measured. The Albumin concentration of detected samples was determined to be 1,036.00 ng/mL with a range of 560.00-1,616.00 ng/mL



Saliva of two individual healthy human donors was measured. The Albumin concentrations of detected samples were determined to be 32.00 µg/mL and 18.60 µg/mL, respectively.



Human milk of two individual healthy human donors was measured. The Albumin concentrations of detected samples were determined to be 106.00 µg/mL and 116.00 µg/mL, respectively.



Human cerebrospinal fluid (CSF) of one individual human donors was measured. The Albumin concentration of detected samples was determined to be 29.50 µg/mL