

TDP-43 Monoclonal Matched Antibody Pair, PBS Only

Catalog Number: MP50030-1

Capture Antibody Information

Catalog Number: 66734-2-PBS	Clone ID: 3C5H2	Conjugate: Unconjugated
Host: Mouse	Reactivity: human	Full name: TAR DNA binding protein
Isotype: IgG1	GenBank: BC001487	Gene ID: 23435
Purification Method: Protein A purification	Immunogen Catalog Number: Ag1231	

Detection Antibody Information

Catalog Number: 60019-2-PBS	Clone ID: 6H6E12	Conjugate: Unconjugated
Host: Mouse	Reactivity: human	Full name: TAR DNA binding protein
Isotype: IgG1	GenBank: BC001487	Gene ID: 23435
Purification Method: Protein G purification		

Applications

Tested Applications: Sandwich ELISA	Range: 6.25-400 ng/mL (Sandwich ELISA)	Recommended Dilutions: It is recommended that this reagent should be titrated in each testing system to obtain optimal results.
--	---	--

Product Information

MP50030-1 targets TDP-43 in immunoassays as a matched antibody pair. Validated in Sandwich ELISA.

Capture antibody: TDP-43 Monoclonal antibody, PBS Only (Capture) 66734-2-PBS (3C5H2). 100 µg. Concentration 1 mg/mL.

Detection antibody: TDP-43 (human specific) Monoclonal antibody, PBS Only (Capture/Detector) 60019-2-PBS (6H6E12). 100 µg. Concentration 1 mg/mL.

Unconjugated mouse monoclonal antibody pair in PBS only storage buffer at a concentration of 1 mg/mL, ready for conjugation.

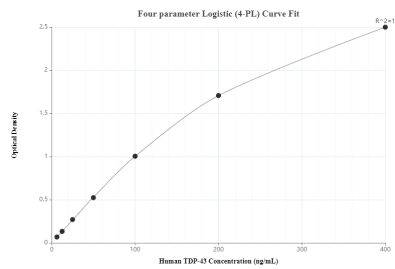
Matched antibody pairs are designed for use in a variety of assays and platforms that require matched antibody pairs.

Antibody use should be optimized for each application and assay.

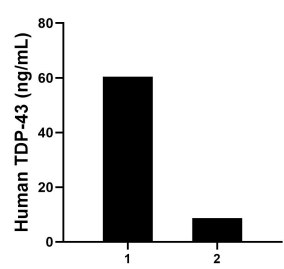
Storage

Storage:
Store at -80°C.
The product is shipped with ice packs. Upon receipt, store it immediately at -80°C
Storage buffer:
PBS only

Selected Validation Data



Sandwich ELISA standard curve of MP50030-1, TDP-43 Monoclonal Matched Antibody Pair, PBS Only. Capture antibody: 66734-2-PBS. Detection antibody: 60019-2-PBS. Standard: Ag13119. Range: 6.25-400 ng/mL



Human cerebrospinal fluid (CSF) of two individual human donors was measured. The TDP-43 concentrations of detected samples were determined to be 60.40 ng/mL and 8.70 ng/mL, respectively.