

# LXN Monoclonal Matched Antibody Pair, PBS Only

Catalog Number: **MP50023-1**

## Capture Antibody Information

**Catalog Number:**  
66957-1-PBS  
**Host:**  
Mouse  
**Isotype:**  
IgG1  
**Purification Method:**  
Protein G purification

**Clone ID:**  
3E5A5  
**Reactivity:**  
Human, Pig, rabbit  
**GenBank:**  
BC005346  
**Immunogen Catalog Number:**  
Ag27922

**Conjugate:**  
Unconjugated  
**Full name:**  
latexin  
**Gene ID:**  
56925

## Detection Antibody Information

**Catalog Number:**  
66957-2-PBS  
**Host:**  
Mouse  
**Isotype:**  
IgG2a  
**Purification Method:**  
Protein A purification

**Clone ID:**  
1G2A4  
**Reactivity:**  
Human  
**GenBank:**  
BC005346  
**Immunogen Catalog Number:**  
Ag27922

**Conjugate:**  
Unconjugated  
**Full name:**  
latexin  
**Gene ID:**  
56925

## Applications

**Tested Applications:**  
Sandwich ELISA

**Range:**  
0.313-20 ng/mL (Sandwich ELISA)

**Recommended Dilutions:**  
It is recommended that this reagent should be titrated in each testing system to obtain optimal results.

## Product Information

MP50023-1 targets LXN in immunoassays as a matched antibody pair. Validated in Sandwich ELISA.

Capture antibody: LXN Monoclonal antibody, PBS Only (Capture) 66957-1-PBS (3E5A5). 100 µg. Concentration 1 mg/mL.

Detection antibody: LXN Monoclonal antibody, PBS Only (Detector) 66957-2-PBS (1G2A4). 100 µg. Concentration 1 mg/mL.

Unconjugated mouse monoclonal antibody pair in PBS only (BSA and azide free) storage buffer at a concentration of 1 mg/mL, ready for conjugation.

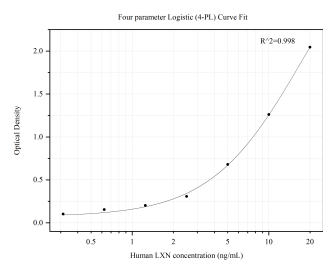
Matched antibody pairs are designed for use in a variety of assays and platforms that require matched antibody pairs.

Antibody use should be optimized for each application and assay.

## Storage

**Storage:**  
Store at -80°C.  
**Storage buffer:**  
PBS only

## Selected Validation Data



Sandwich ELISA standard curve ofMP50023-1, LXN  
Monoclonal Matched Antibody Pair, PBS Only.  
Capture antibody: 66957-1-PBS. Detection  
antibody: HRP-conjugated 66957-2-PBS. Standard:  
Ag27922. Range: 0.313-20 ng/mL