

For Research Use Only

Gastrin Recombinant Matched Antibody Pair, PBS Only



Catalog Number:MP03432-1

Capture Antibody Information

Catalog Number:
88429-2-PBS

Host:
Rabbit

Isotype:
IgG

Purification Method:
Protein A purification

Clone ID:
260471H4

Reactivity:
human

GenBank:
NM_000805.4

Immunogen Catalog Number:
Eg3089

Conjugate:
Unconjugated

Full name:
gastrin

Gene ID:
2520

Detection Antibody Information

Catalog Number:
88429-1-PBS

Host:
Rabbit

Isotype:
IgG

Purification Method:
Protein A purification

Clone ID:
260471E5

Reactivity:
human

GenBank:
NM_000805.4

Immunogen Catalog Number:
Eg3089

Conjugate:
Unconjugated

Full name:
gastrin

Gene ID:
2520

Applications

Tested Applications:
Sandwich ELISA

Range:
19.5-1250 pg/mL (Sandwich ELISA)

Recommended Dilutions:
It is recommended that this reagent should be titrated in each testing system to obtain optimal results.

Product Information

MP03432-1 targets Gastrin in immunoassays as a matched antibody pair. Validated in Sandwich ELISA.

Capture antibody: GAST Recombinant monoclonal antibody, PBS Only (Capture) 88429-2-PBS (260471H4). 100 μ g. Concentration 1 mg/mL.

Detection antibody: GAST Recombinant monoclonal antibody, PBS Only (Detector) 88429-1-PBS (260471E5). 100 μ g. Concentration 1 mg/mL.

Unconjugated rabbit recombinant monoclonal antibody pair in PBS only storage buffer at a concentration of 1 mg/mL, ready for conjugation. Created using Proteintech's proprietary in-house recombinant technology. Recombinant production enables unrivalled batch-to-batch consistency, easy scale-up, and future security of supply.

Matched antibody pairs are designed for use in a variety of assays and platforms that require matched antibody pairs.

Antibody use should be optimized for each application and assay.

Storage

Storage:

Store at -80°C.

The product is shipped with ice packs. Upon receipt, store it immediately at -80°C

Storage buffer:
PBS only

For technical support and original validation data for this product please contact:

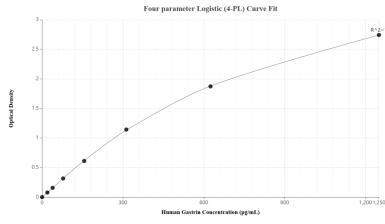
T: 4006900926

E: Proteintech-CN@ptglab.com

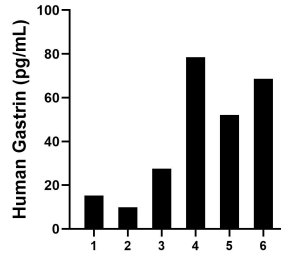
W: ptgcn.com

This product is exclusively available under Proteintech Group brand and is not available to purchase from any other manufacturer.

Selected Validation Data



Sandwich ELISA standard curve of MP03432-1, Human Gastrin Recombinant Matched Antibody Pair - PBS only. 88429-2-PBS was coated to a plate as the capture antibody and incubated with serial dilutions of standard Eg3089. 88429-1-PBS was HRP conjugated as the detection antibody. Range: 19.5-1250 pg/mL



Plasma of six individual healthy human donors was measured. The Gastrin concentration of detected samples was determined to be 41.9 pg/mL with a range of 9.8-78.4 pg/mL