

For Research Use Only

MZB1 Recombinant Matched Antibody Pair, PBS Only



Catalog Number:MP03414-2

Capture Antibody Information

Catalog Number:
88201-4-PBS
Host:
Rabbit
Isotype:
IgG
Purification Method:
Protein A purification

Clone ID:
260678A1
Reactivity:
human
GenBank:
BC021275
Immunogen Catalog Number:
Ag42451

Conjugate:
Unconjugated
Full name:
hypothetical protein MGC29506
Gene ID:
51237

Detection Antibody Information

Catalog Number:
88201-2-PBS
Host:
Rabbit
Isotype:
IgG
Purification Method:
Protein A purification

Clone ID:
260678E6
Reactivity:
human
GenBank:
BC021275
Immunogen Catalog Number:
Ag42451

Conjugate:
Unconjugated
Full name:
hypothetical protein MGC29506
Gene ID:
51237

Applications

Tested Applications:
Sandwich ELISA

Range:
0.156-10 ng/mL (Sandwich ELISA)

Recommended Dilutions:
It is recommended that this reagent should be titrated in each testing system to obtain optimal results.

Product Information

MP03414-2 targets MZB1 in immunoassays as a matched antibody pair. Validated in Sandwich ELISA.

Capture antibody: MZB1 Recombinant monoclonal antibody, PBS Only (Capture) 88201-4-PBS (260678A1). 100 µg. Concentration 1 mg/mL.

Detection antibody: MZB1 Recombinant monoclonal antibody, PBS Only (Detector) 88201-2-PBS (260678E6). 100 µg. Concentration 1 mg/mL.

Unconjugated rabbit recombinant monoclonal antibody pair in PBS only storage buffer at a concentration of 1 mg/mL, ready for conjugation. Created using Proteintech's proprietary in-house recombinant technology. Recombinant production enables unrivalled batch-to-batch consistency, easy scale-up, and future security of supply.

Matched antibody pairs are designed for use in a variety of assays and platforms that require matched antibody pairs.

Antibody use should be optimized for each application and assay.

Storage

Storage:
Store at -80°C.
The product is shipped with ice packs. Upon receipt, store it immediately at -80°C
Storage buffer:
PBS only

For technical support and original validation data for this product please contact:

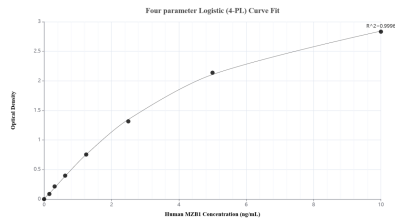
T: 4006900926

E: Proteintech-CN@ptglab.com

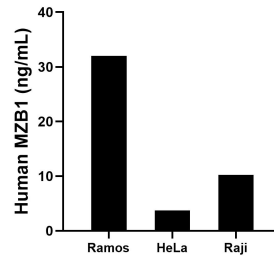
W: ptgcn.com

This product is exclusively available under Proteintech Group brand and is not available to purchase from any other manufacturer.

Selected Validation Data



Sandwich ELISA standard curve of MP03414-2, Human MZB1 Recombinant Matched Antibody Pair - PBS only. 88201-4-PBS was coated to a plate as the capture antibody and incubated with serial dilutions of standard Ag42451. 88201-2-PBS was HRP conjugated as the detection antibody. Range: 0.156-10 ng/mL



The mean MZB1 concentration was determined to be 32.02 ng/mL in Ramos cell extract based on a 1.20 mg/mL extract load, 3.72 ng/mL in HeLa cell extract based on a 1.20 mg/mL extract load and 10.25 ng/mL in Raji cell extract based on a 1.50 mg/mL extract load.