

For Research Use Only

ACD Recombinant Matched Antibody Pair, PBS Only



Catalog Number:MP03378-1

Capture Antibody Information

Catalog Number:
88168-3-PBS
Host:
Rabbit
Isotype:
IgG
Purification Method:
Protein A purification

Clone ID:
260314F11
Reactivity:
human
GenBank:
BC016904
Immunogen Catalog Number:
Ag23021

Conjugate:
Unconjugated
Full name:
adrenocortical dysplasia homolog (mouse)
Gene ID:
65057

Detection Antibody Information

Catalog Number:
88168-2-PBS
Host:
Rabbit
Isotype:
IgG
Purification Method:
Protein A purification

Clone ID:
260314C12
Reactivity:
human
GenBank:
BC016904
Immunogen Catalog Number:
Ag23021

Conjugate:
Unconjugated
Full name:
adrenocortical dysplasia homolog (mouse)
Gene ID:
65057

Applications

Tested Applications:
Cytometric bead array

Range:
0.312-40 ng/mL (Cytometric Bead Array)

Recommended Dilutions:
It is recommended that this reagent should be titrated in each testing system to obtain optimal results.

Product Information

MP03378-1 targets ACD in immunoassays as a matched antibody pair. Validated in Cytometric bead array.

Capture antibody: ACD Recombinant monoclonal antibody, PBS Only (Capture) 88168-3-PBS (260314F11). 100 μ g. Concentration 1 mg/mL.

Detection antibody: ACD Recombinant monoclonal antibody, PBS Only (Detector) 88168-2-PBS (260314C12). 100 μ g. Concentration 1 mg/mL.

Unconjugated rabbit recombinant monoclonal antibody pair in PBS only storage buffer at a concentration of 1 mg/mL, ready for conjugation. Created using Proteintech's proprietary in-house recombinant technology. Recombinant production enables unrivalled batch-to-batch consistency, easy scale-up, and future security of supply.

Matched antibody pairs are designed for use in a variety of assays and platforms that require matched antibody pairs.

Antibody use should be optimized for each application and assay.

Storage

Storage:
Store at -80°C.
The product is shipped with ice packs. Upon receipt, store it immediately at -80°C
Storage buffer:
PBS only

For technical support and original validation data for this product please contact:

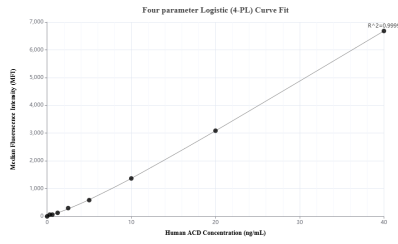
T: 4006900926

E: Proteintech-CN@ptglab.com

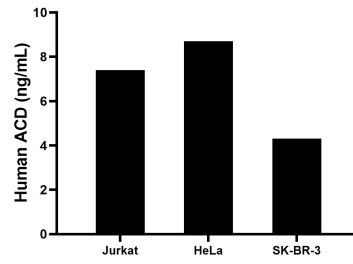
W: ptgcn.com

This product is exclusively available under Proteintech Group brand and is not available to purchase from any other manufacturer.

Selected Validation Data



Cytometric bead array standard curve of MP03378-1, ACD Recombinant Matched Antibody Pair, PBS Only. Capture antibody: 88168-3-PBS. Detection antibody: 88168-2-PBS. Standard: Ag23021. Range: 0.312-40 ng/mL



The mean ACD concentration was determined to be 7.4 ng/mL in Jurkat cell extract based on a 1.0 mg/mL extract load, 8.7 ng/mL in HeLa cell extract based on a 1.0 mg/mL extract load, 4.3 ng/mL in SK-BR-3 cell extract based on a 1.0 mg/mL extract load.