

For Research Use Only

ROBO4 Recombinant Matched Antibody Pair, PBS Only



Catalog Number:MP03363-1

Capture Antibody Information

Catalog Number:
88139-3-PBS
Host:
Rabbit
Isotype:
IgG
Purification Method:
Protein A purification

Clone ID:
260378A5
Reactivity:
human
GenBank:
NM_019055.6
Immunogen Catalog Number:
Eg7821

Conjugate:
Unconjugated
Full name:
roundabout homolog 4, magic roundabout (Drosophila)
Gene ID:
54538

Detection Antibody Information

Catalog Number:
88139-2-PBS
Host:
Rabbit
Isotype:
IgG
Purification Method:
Protein A purification

Clone ID:
260378E9
Reactivity:
human
GenBank:
NM_019055.6
Immunogen Catalog Number:
Eg7821

Conjugate:
Unconjugated
Full name:
roundabout homolog 4, magic roundabout (Drosophila)
Gene ID:
54538

Applications

Tested Applications:
Cytometric bead array

Range:
0.312-40 ng/mL (Cytometric Bead Array)

Recommended Dilutions:
It is recommended that this reagent should be titrated in each testing system to obtain optimal results.

Product Information

MP03363-1 targets ROBO4 in immunoassays as a matched antibody pair. Validated in Cytometric bead array.

Capture antibody: ROBO4 Recombinant monoclonal antibody, PBS Only (Capture) 88139-3-PBS (260378A5). 100 µg. Concentration 1 mg/mL.

Detection antibody: ROBO4 Recombinant monoclonal antibody, PBS Only (Detector) 88139-2-PBS (260378E9). 100 µg. Concentration 1 mg/mL.

Unconjugated rabbit recombinant monoclonal antibody pair in PBS only storage buffer at a concentration of 1 mg/mL, ready for conjugation. Created using Proteintech's proprietary in-house recombinant technology. Recombinant production enables unrivalled batch-to-batch consistency, easy scale-up, and future security of supply.

Matched antibody pairs are designed for use in a variety of assays and platforms that require matched antibody pairs.

Antibody use should be optimized for each application and assay.

Storage

Storage:
Store at -80°C.
The product is shipped with ice packs. Upon receipt, store it immediately at -80°C
Storage buffer:
PBS only

For technical support and original validation data for this product please contact:

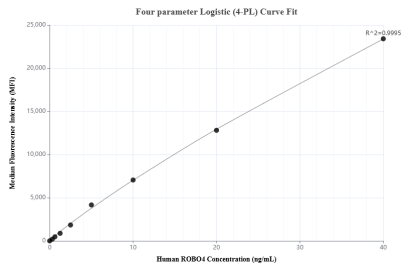
T: 4006900926

E: Proteintech-CN@ptglab.com

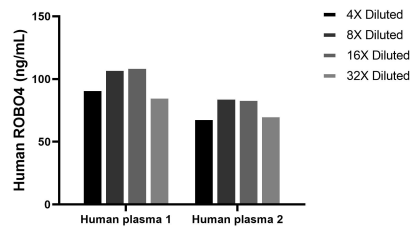
W: ptgcn.com

This product is exclusively available under Proteintech Group brand and is not available to purchase from any other manufacturer.

Selected Validation Data



Cytometric bead array standard curve of MP03363-1, ROBO4 Recombinant Matched Antibody Pair, PBS Only. Capture antibody: 88139-3-PBS. Detection antibody: 88139-2-PBS. Standard: Eg7821. Range: 0.312-40 ng/mL



The mean ROBO4 concentration was determined to be 94.5 ng/mL in Human plasma 1, 74.4 ng/mL in Human plasma 2.