

Integrin alpha-10 Recombinant Matched Antibody Pair, PBS Only

Catalog Number:MP03362-1

Capture Antibody Information

Catalog Number: 88138-3-PBS	Clone ID: 260141D2	Conjugate: Unconjugated
Host: Rabbit	Reactivity: human	Full name: integrin, alpha 10
Isotype: IgG	GenBank: NM_003637.5	Gene ID: 8515
Purification Method: Protein A purification	Immunogen Catalog Number: Eg6182	

Detection Antibody Information

Catalog Number: 88138-2-PBS	Clone ID: 260141C9	Conjugate: Unconjugated
Host: Rabbit	Reactivity: human	Full name: integrin, alpha 10
Isotype: IgG	GenBank: NM_003637.5	Gene ID: 8515
Purification Method: Protein A purification	Immunogen Catalog Number: Eg6182	

Applications

Tested Applications: Cytometric bead array	Range: 3.125-200 ng/mL (Cytometric Bead Array)	Recommended Dilutions: It is recommended that this reagent should be titrated in each testing system to obtain optimal results.
--	--	---

Product Information

MP03362-1 targets Integrin alpha-10 in immunoassays as a matched antibody pair. Validated in Cytometric bead array.

Capture antibody: Integrin alpha-10 Recombinant monoclonal antibody, PBS Only (Capture) 88138-3-PBS (260141D2). 100 µg. Concentration 1 mg/mL.

Detection antibody: Integrin alpha-10 Recombinant monoclonal antibody, PBS Only (Detector) 88138-2-PBS (260141C9). 100 µg. Concentration 1 mg/mL.

Unconjugated rabbit recombinant monoclonal antibody pair in PBS only storage buffer at a concentration of 1 mg/mL, ready for conjugation. Created using Proteintech's proprietary in-house recombinant technology. Recombinant production enables unrivalled batch-to-batch consistency, easy scale-up, and future security of supply.

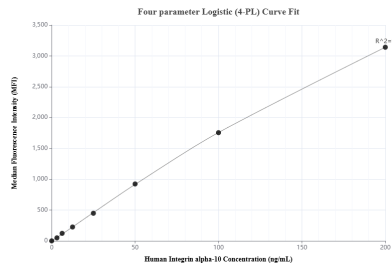
Matched antibody pairs are designed for use in a variety of assays and platforms that require matched antibody pairs.

Antibody use should be optimized for each application and assay.

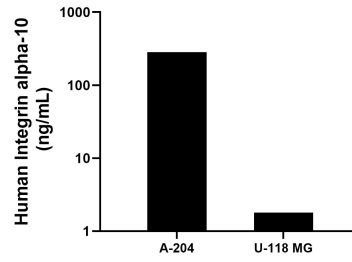
Storage

Storage:
Store at -80°C.
The product is shipped with ice packs. Upon receipt, store it immediately at -80°C
Storage buffer:
PBS only

Selected Validation Data



Cytometric bead array standard curve of MP03362-1, Integrin alpha-10 Recombinant Matched Antibody Pair, PBS Only. Capture antibody: 88138-3-PBS. Detection antibody: 88138-2-PBS. Standard: Eg6182. Range: 3.125-200 ng/mL



The mean Integrin alpha-10 concentration was determined to be 282.7 ng/mL in A-204 cell extract based on a 1.0 mg/mL extract load, 1.8 ng/mL in U-118 MG cell extract based on a 1.0 mg/mL extract load.