

For Research Use Only

CD300LD Recombinant Matched Antibody Pair, PBS Only



Catalog Number:MP03358-1

Capture Antibody Information

Catalog Number:
88179-3-PBS
Host:
Rabbit
Isotype:
IgG
Purification Method:
Protein A purification

Clone ID:
253533B6
Reactivity:
human
GenBank:
NM_001115152.2
Immunogen Catalog Number:
Eg6126

Conjugate:
Unconjugated
Full name:
CD300 molecule-like family member d
Gene ID:
100131439

Detection Antibody Information

Catalog Number:
88179-2-PBS
Host:
Rabbit
Isotype:
IgG
Purification Method:
Protein A purification

Clone ID:
253533G11
Reactivity:
human
GenBank:
NM_001115152.2
Immunogen Catalog Number:
Eg6126

Conjugate:
Unconjugated
Full name:
CD300 molecule-like family member d
Gene ID:
100131439

Applications

Tested Applications:
Cytometric bead array

Range:
0.469-30 ng/mL (Cytometric Bead Array)

Recommended Dilutions:
It is recommended that this reagent should be titrated in each testing system to obtain optimal results.

Product Information

MP03358-1 targets CD300LD in immunoassays as a matched antibody pair. Validated in Cytometric bead array.

Capture antibody: CD300LD Recombinant monoclonal antibody, PBS Only (Capture) 88179-3-PBS (253533B6). 100 μ g. Concentration 1 mg/mL.

Detection antibody: CD300LD Recombinant monoclonal antibody, PBS Only (Detector) 88179-2-PBS (253533G11). 100 μ g. Concentration 1 mg/mL.

Unconjugated rabbit recombinant monoclonal antibody pair in PBS only storage buffer at a concentration of 1 mg/mL, ready for conjugation. Created using Proteintech's proprietary in-house recombinant technology. Recombinant production enables unrivalled batch-to-batch consistency, easy scale-up, and future security of supply.

Matched antibody pairs are designed for use in a variety of assays and platforms that require matched antibody pairs.

Antibody use should be optimized for each application and assay.

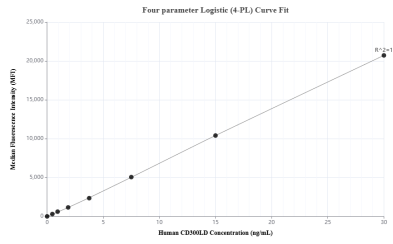
Storage

Storage:
Store at -80°C.
The product is shipped with ice packs. Upon receipt, store it immediately at -80°C
Storage buffer:
PBS only

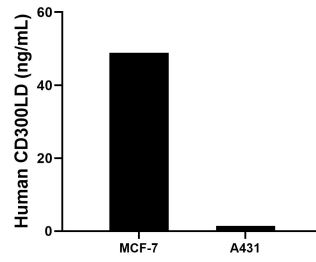
For technical support and original validation data for this product please contact:
T: 4006900926 E: Proteintech-CN@ptglab.com W: ptgcn.com

This product is exclusively available under Proteintech Group brand and is not available to purchase from any other manufacturer.

Selected Validation Data



Cytometric bead array standard curve of MP03358-1, CD300LD Recombinant Matched Antibody Pair, PBS Only. Capture antibody: 88179-3-PBS. Detection antibody: 88179-2-PBS. Standard: Eg6126. Range: 0.469-30 ng/mL



The mean CD300LD concentration was determined to be 48.9 ng/mL in MCF-7 cell extract based on a 1.2 mg/mL extract load, 1.4 ng/mL in A431 cell extract based on a 1.2 mg/mL extract load.