

For Research Use Only

# MPIG6B Recombinant Matched Antibody Pair, PBS Only



Catalog Number:MP03352-1

## Capture Antibody Information

**Catalog Number:**  
88167-2-PBS  
**Host:**  
Rabbit  
**Isotype:**  
IgG  
**Purification Method:**  
Protein A purification

**Clone ID:**  
260393F2  
**Reactivity:**  
human  
**GenBank:**  
NM\_138272.3  
**Immunogen Catalog Number:**  
Eg5762

**Conjugate:**  
Unconjugated  
**Full name:**  
chromosome 6 open reading frame 25  
**Gene ID:**  
80739

## Detection Antibody Information

**Catalog Number:**  
88167-1-PBS  
**Host:**  
Rabbit  
**Isotype:**  
IgG  
**Purification Method:**  
Protein A purification

**Clone ID:**  
260393E3  
**Reactivity:**  
human  
**GenBank:**  
NM\_138272.3  
**Immunogen Catalog Number:**  
Eg5762

**Conjugate:**  
Unconjugated  
**Full name:**  
chromosome 6 open reading frame 25  
**Gene ID:**  
80739

## Applications

**Tested Applications:**  
Cytometric bead array

**Range:**  
0.156-20 ng/mL (Cytometric Bead Array)

**Recommended Dilutions:**  
It is recommended that this reagent should be titrated in each testing system to obtain optimal results.

## Product Information

MP03352-1 targets MPIG6B in immunoassays as a matched antibody pair. Validated in Cytometric bead array.

Capture antibody: G6B Recombinant monoclonal antibody, PBS Only (Capture) 88167-2-PBS (260393F2). 100 µg. Concentration 1 mg/mL.

Detection antibody: G6B Recombinant monoclonal antibody, PBS Only (Detector) 88167-1-PBS (260393E3). 100 µg. Concentration 1 mg/mL.

Unconjugated rabbit recombinant monoclonal antibody pair in PBS only storage buffer at a concentration of 1 mg/mL, ready for conjugation. Created using Proteintech's proprietary in-house recombinant technology. Recombinant production enables unrivalled batch-to-batch consistency, easy scale-up, and future security of supply.

Matched antibody pairs are designed for use in a variety of assays and platforms that require matched antibody pairs.

Antibody use should be optimized for each application and assay.

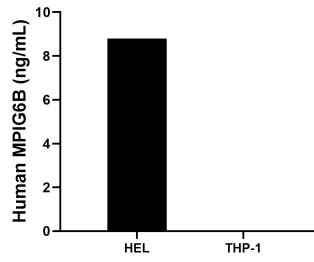
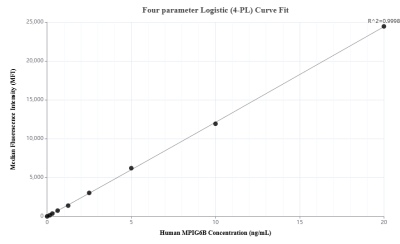
## Storage

**Storage:**  
Store at -80°C.  
**The product is shipped with ice packs. Upon receipt, store it immediately at -80°C**  
**Storage buffer:**  
PBS only

For technical support and original validation data for this product please contact:  
T: 4006900926 E: Proteintech-CN@ptglab.com W: ptgcn.com

This product is exclusively available under Proteintech Group brand and is not available to purchase from any other manufacturer.

## Selected Validation Data



Cytometric bead array standard curve of MP03352-1, MPIG6B Recombinant Matched Antibody Pair, PBS Only. Capture antibody: 88167-2-PBS. Detection antibody: 88167-1-PBS. Standard: Eg5762. Range: 0.156-20 ng/mL

The mean MPIG6B concentration was determined to be 8.8 ng/mL in HEL cell extract based on a 1.5 mg/mL extract load, THP-1 cell extract were served as a negative control.