

For Research Use Only

Prokineticin 1 Recombinant Matched Antibody Pair, PBS Only



Catalog Number:MP03323-1

Capture Antibody Information

Catalog Number:
88104-2-PBS

Host:
Rabbit

Isotype:
IgG

Purification Method:
Protein A purification

Clone ID:
260149E11

Reactivity:
human

GenBank:
BC025399

Immunogen Catalog Number:
Eg5356

Conjugate:
Unconjugated

Full name:
prokineticin 1

Gene ID:
84432

Detection Antibody Information

Catalog Number:
88104-1-PBS

Host:
Rabbit

Isotype:
IgG

Purification Method:
Protein A purification

Clone ID:
260149G4

Reactivity:
human

GenBank:
BC025399

Immunogen Catalog Number:
Eg5356

Conjugate:
Unconjugated

Full name:
prokineticin 1

Gene ID:
84432

Applications

Tested Applications:
Sandwich ELISA

Range:
39.1-2500 pg/mL (Sandwich ELISA)

Recommended Dilutions:
It is recommended that this reagent should be titrated in each testing system to obtain optimal results.

Product Information

MP03323-1 targets Prokineticin 1 in immunoassays as a matched antibody pair. Validated in Sandwich ELISA.

Capture antibody: PROK1 Recombinant monoclonal antibody, PBS Only (Capture) 88104-2-PBS (260149E11). 100 μ g. Concentration 1 mg/mL.

Detection antibody: PROK1 Recombinant monoclonal antibody, PBS Only (Detector) 88104-1-PBS (260149G4). 100 μ g. Concentration 1 mg/mL.

Unconjugated rabbit recombinant monoclonal antibody pair in PBS only storage buffer at a concentration of 1 mg/mL, ready for conjugation. Created using Proteintech's proprietary in-house recombinant technology. Recombinant production enables unrivalled batch-to-batch consistency, easy scale-up, and future security of supply.

Matched antibody pairs are designed for use in a variety of assays and platforms that require matched antibody pairs.

Antibody use should be optimized for each application and assay.

Storage

Storage:

Store at -80°C.

The product is shipped with ice packs. Upon receipt, store it immediately at -80°C

Storage buffer:

PBS only

For technical support and original validation data for this product please contact:

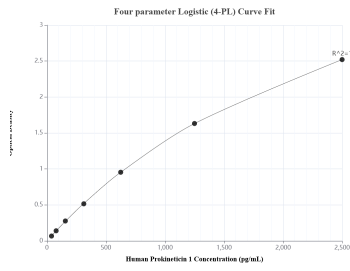
T: 4006900926

E: Proteintech-CN@ptglab.com

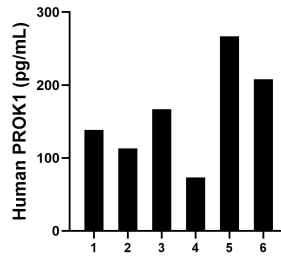
W: ptgcn.com

This product is exclusively available under Proteintech Group brand and is not available to purchase from any other manufacturer.

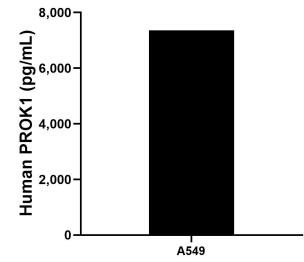
Selected Validation Data



Sandwich ELISA standard curve of MP03323-1, Human Prokineticin 1 Recombinant Matched Antibody Pair - PBS only. 88104-2-PBS was coated to a plate as the capture antibody and incubated with serial dilutions of standard Eg5356. 88104-1-PBS was HRP conjugated as the detection antibody. Range: 39.1-2500 pg/mL



Plasma of six individual healthy human donors was measured. The human Prokineticin 1 concentration of detected samples was determined to be 161.0 pg/mL with a range of 73.4-266.7 pg/mL



The mean Prokineticin 1 concentration was determined to be 7,360.8 pg/mL in A549 cell extract based on a 1.2 mg/mL extract load.