

PRKACA Recombinant Matched Antibody Pair, PBS Only

Catalog Number:MP03319-1

Capture Antibody Information

Catalog Number:
88029-3-PBS
Host:
Rabbit
Isotype:
IgG
Purification Method:
Protein A purification

Clone ID:
260253D10
Reactivity:
human
GenBank:
BC039846
Immunogen Catalog Number:
Ag26392

Conjugate:
Unconjugated
Full name:
protein kinase, cAMP-dependent, catalytic, alpha
Gene ID:
5566

Detection Antibody Information

Catalog Number:
88029-2-PBS
Host:
Rabbit
Isotype:
IgG
Purification Method:
Protein A purification

Clone ID:
260253F1
Reactivity:
human
GenBank:
BC039846
Immunogen Catalog Number:
Ag26392

Conjugate:
Unconjugated
Full name:
protein kinase, cAMP-dependent, catalytic, alpha
Gene ID:
5566

Applications

Tested Applications:
Cytometric bead array

Range:
0.469-30 ng/mL (Cytometric Bead Array)

Recommended Dilutions:
It is recommended that this reagent should be titrated in each testing system to obtain optimal results.

Product Information

MP03319-1 targets PRKACA in immunoassays as a matched antibody pair. Validated in Cytometric bead array.

Capture antibody: PRKACA Recombinant monoclonal antibody, PBS Only (Capture) 88029-3-PBS (260253D10). 100 µg. Concentration 1 mg/mL.

Detection antibody: PRKACA Recombinant monoclonal antibody, PBS Only (Detector) 88029-2-PBS (260253F1). 100 µg. Concentration 1 mg/mL.

Unconjugated rabbit recombinant monoclonal antibody pair in PBS only storage buffer at a concentration of 1 mg/mL, ready for conjugation. Created using Proteintech's proprietary in-house recombinant technology. Recombinant production enables unrivalled batch-to-batch consistency, easy scale-up, and future security of supply.

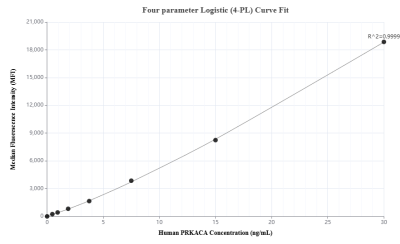
Matched antibody pairs are designed for use in a variety of assays and platforms that require matched antibody pairs.

Antibody use should be optimized for each application and assay.

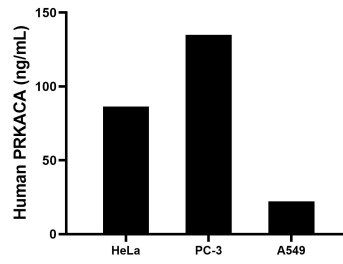
Storage

Storage:
Store at -80°C.
The product is shipped with ice packs. Upon receipt, store it immediately at -80°C
Storage buffer:
PBS only

Selected Validation Data



Cytometric bead array standard curve of MP03319-1, PRKACA Recombinant Matched Antibody Pair, PBS Only. Capture antibody: 88029-3-PBS. Detection antibody: 88029-2-PBS. Standard: Ag26392. Range: 0.469-30 ng/mL



The mean TRIP4 concentration was determined to be 86.3 ng/mL in HeLa cell extract based on a 1.2 mg/mL extract load, 134.9 ng/mL in PC-3 cell extract based on a 1.2 mg/mL extract load, 22.2 ng/mL in A549 cell extract based on a 1.2 mg/mL extract load.