

For Research Use Only

Mouse RAMP2 Recombinant Matched Antibody Pair, PBS Only



Catalog Number:MP03316-1

Capture Antibody Information

Catalog Number:
88020-1-PBS
Host:
Rabbit
Isotype:
IgG
Purification Method:
Protein A purification

Clone ID:
260084F11
Reactivity:
mouse
GenBank:
NM_019444.2
Immunogen Catalog Number:
Eg9065

Conjugate:
Unconjugated
Full name:
receptor (calcitonin) activity modifying protein 2
Gene ID:
54409

Detection Antibody Information

Catalog Number:
88020-3-PBS
Host:
Rabbit
Isotype:
IgG
Purification Method:
Protein A purification

Clone ID:
260084E10
Reactivity:
mouse
GenBank:
NM_019444.2
Immunogen Catalog Number:
Eg9065

Conjugate:
Unconjugated
Full name:
receptor (calcitonin) activity modifying protein 2
Gene ID:
54409

Applications

Tested Applications:
Cytometric bead array

Range:
0.156-20 ng/mL (Cytometric Bead Array)

Recommended Dilutions:
It is recommended that this reagent should be titrated in each testing system to obtain optimal results.

Product Information

MP03316-1 targets RAMP2 in immunoassays as a matched antibody pair. Validated in Cytometric bead array.

Capture antibody: Mouse RAMP2 Recombinant monoclonal antibody, PBS Only (Capture) 88020-1-PBS (260084F11). 100 µg. Concentration 1 mg/mL.

Detection antibody: Mouse RAMP2 Recombinant monoclonal antibody, PBS Only (Detector) 88020-3-PBS (260084E10). 100 µg. Concentration 1 mg/mL.

Unconjugated rabbit recombinant monoclonal antibody pair in PBS only storage buffer at a concentration of 1 mg/mL, ready for conjugation. Created using Proteintech's proprietary in-house recombinant technology. Recombinant production enables unrivalled batch-to-batch consistency, easy scale-up, and future security of supply.

Matched antibody pairs are designed for use in a variety of assays and platforms that require matched antibody pairs.

Antibody use should be optimized for each application and assay.

Storage

Storage:
Store at -80°C.
The product is shipped with ice packs. Upon receipt, store it immediately at -80°C
Storage buffer:
PBS only

For technical support and original validation data for this product please contact:

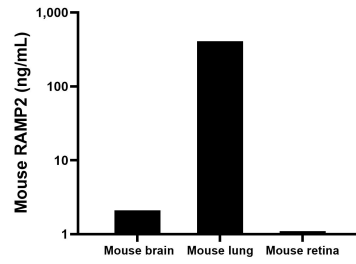
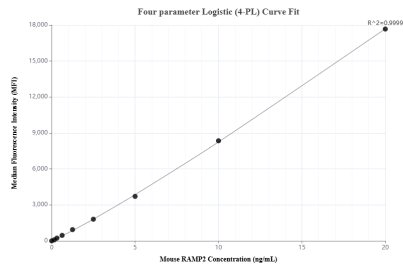
T: 4006900926

E: Proteintech-CN@ptglab.com

W: ptgcn.com

This product is exclusively available under Proteintech Group brand and is not available to purchase from any other manufacturer.

Selected Validation Data



Cytometric bead array standard curve of MP03316-1, MOUSE RAMP2 Recombinant Matched Antibody Pair, PBS Only. Capture antibody: 88020-1-PBS. Detection antibody: 88020-3-PBS. Standard: Eg9065. Range: 0.156-20 ng/mL

The mean RAMP2 concentration was determined to be 2.1 ng/mL in mouse brain tissue extract based on a 1.0 mg/mL extract load, 408.1 ng/mL in mouse lung tissue extract based on a 1.0 mg/mL extract load, 1.1 ng/mL in mouse retina tissue extract based on a 1.0 mg/mL extract load.