

For Research Use Only



HHLA2 Recombinant Matched Antibody Pair, PBS Only

Catalog Number:MP03313-2

Capture Antibody Information

Catalog Number:
88064-4-PBS

Host:
Rabbit

Isotype:
IgG

Purification Method:
Protein A purification

Clone ID:
260180G3

Reactivity:
human

GenBank:
NM_007072

Immunogen Catalog Number:
Eg5055

Conjugate:
Unconjugated

Full name:
HERV-H LTR-associating 2

Gene ID:
11148

Detection Antibody Information

Catalog Number:
88064-2-PBS

Host:
Rabbit

Isotype:
IgG

Purification Method:
Protein A purification

Clone ID:
260180E1

Reactivity:
human

GenBank:
NM_007072

Immunogen Catalog Number:
Eg5055

Conjugate:
Unconjugated

Full name:
HERV-H LTR-associating 2

Gene ID:
11148

Applications

Tested Applications:
Sandwich ELISA

Range:
0.313-20 ng/mL (Sandwich ELISA)

Recommended Dilutions:
It is recommended that this reagent should be titrated in each testing system to obtain optimal results.

Product Information

MP03313-2 targets HHLA2 in immunoassays as a matched antibody pair. Validated in Sandwich ELISA.

Capture antibody: HHLA2 Recombinant monoclonal antibody, PBS Only (Capture) 88064-4-PBS (260180G3). 100 µg. Concentration 1 mg/mL.

Detection antibody: HHLA2 Recombinant monoclonal antibody, PBS Only (Detector) 88064-2-PBS (260180E1). 100 µg. Concentration 1 mg/mL.

Unconjugated rabbit recombinant monoclonal antibody pair in PBS only storage buffer at a concentration of 1 mg/mL, ready for conjugation. Created using Proteintech's proprietary in-house recombinant technology. Recombinant production enables unrivalled batch-to-batch consistency, easy scale-up, and future security of supply.

Matched antibody pairs are designed for use in a variety of assays and platforms that require matched antibody pairs.

Antibody use should be optimized for each application and assay.

Storage

Storage:
Store at -80°C.

The product is shipped with ice packs. Upon receipt, store it immediately at -80°C

Storage buffer:
PBS only

For technical support and original validation data for this product please contact:

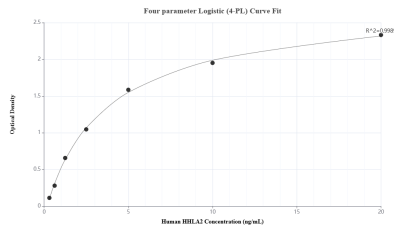
T: 4006900926

E: Proteintech-CN@ptglab.com

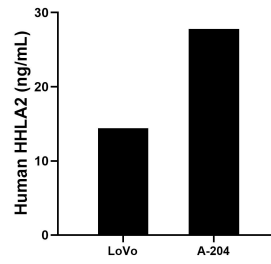
W: ptgcn.com

This product is exclusively available under Proteintech Group brand and is not available to purchase from any other manufacturer.

Selected Validation Data



Sandwich ELISA standard curve of MP03313-2, Human HHLA2 Recombinant Matched Antibody Pair - PBS only. 88064-4-PBS was coated to a plate as the capture antibody and incubated with serial dilutions of standard Eg5055. 88064-2-PBS was HRP conjugated as the detection antibody. Range: 0.313-20 ng/mL



The mean HHLA2 concentration was determined to be 14.39 ng/mL in LoVo cell extract based on a 1.5 mg/mL extract load and 27.76 ng/mL in A-204 cell extract based on a 1.2 mg/mL extract load.