

For Research Use Only



# HHLA2 Recombinant Matched Antibody Pair, PBS Only

Catalog Number:MP03313-1

## Capture Antibody Information

<b>Catalog Number:</b> 88064-3-PBS	<b>Clone ID:</b> 260180E5	<b>Conjugate:</b> Unconjugated
<b>Host:</b> Rabbit	<b>Reactivity:</b> human	<b>Full name:</b> HERV-H LTR-associating 2
<b>Isotype:</b> IgG	<b>GenBank:</b> NM_007072	<b>Gene ID:</b> 11148
<b>Purification Method:</b> Protein A purification	<b>Immunogen Catalog Number:</b> Eg5055	

## Detection Antibody Information

<b>Catalog Number:</b> 88064-2-PBS	<b>Clone ID:</b> 260180E1	<b>Conjugate:</b> Unconjugated
<b>Host:</b> Rabbit	<b>Reactivity:</b> human	<b>Full name:</b> HERV-H LTR-associating 2
<b>Isotype:</b> IgG	<b>GenBank:</b> NM_007072	<b>Gene ID:</b> 11148
<b>Purification Method:</b> Protein A purification	<b>Immunogen Catalog Number:</b> Eg5055	

## Applications

<b>Tested Applications:</b> Cytometric bead array	<b>Range:</b> 0.156-20 ng/mL (Cytometric Bead Array)	<b>Recommended Dilutions:</b> It is recommended that this reagent should be titrated in each testing system to obtain optimal results.
--	---	---

## Product Information

MP03313-1 targets HHLA2 in immunoassays as a matched antibody pair. Validated in Cytometric bead array.

Capture antibody: HHLA2 Recombinant monoclonal antibody, PBS Only (Capture) 88064-3-PBS (260180E5). 100 µg. Concentration 1 mg/mL.

Detection antibody: HHLA2 Recombinant monoclonal antibody, PBS Only (Detector) 88064-2-PBS (260180E1). 100 µg. Concentration 1 mg/mL.

Unconjugated rabbit recombinant monoclonal antibody pair in PBS only storage buffer at a concentration of 1 mg/mL, ready for conjugation. Created using Proteintech's proprietary in-house recombinant technology. Recombinant production enables unrivalled batch-to-batch consistency, easy scale-up, and future security of supply.

Matched antibody pairs are designed for use in a variety of assays and platforms that require matched antibody pairs.

Antibody use should be optimized for each application and assay.

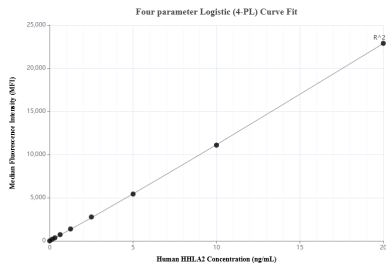
## Storage

**Storage:**  
Store at -80°C.  
**The product is shipped with ice packs. Upon receipt, store it immediately at -80°C**  
**Storage buffer:**  
PBS only

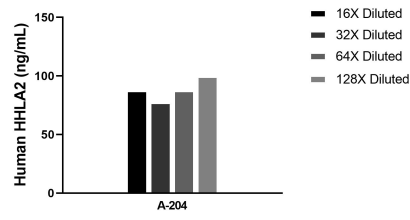
For technical support and original validation data for this product please contact:  
T: 4006900926 E: Proteintech-CN@ptglab.com W: ptgcn.com

**This product is exclusively available under Proteintech Group brand and is not available to purchase from any other manufacturer.**

## Selected Validation Data



Cytometric bead array standard curve of MP03313-1, HHLA2 Recombinant Matched Antibody Pair, PBS Only. Capture antibody: 88064-3-PBS. Detection antibody: 88064-2-PBS. Standard: Eg5055. Range: 0.156-20 ng/mL



The mean HHLA2 concentration was determined to be 86.2 ng/mL in A-204 cell extract based on a 1.2 mg/mL extract load.