

For Research Use Only

ADI1 Recombinant Matched Antibody Pair, PBS Only



Catalog Number:MP03295-1

Capture Antibody Information

Catalog Number:
87964-4-PBS
Host:
Rabbit
Isotype:
IgG
Purification Method:
Protein A purification

Clone ID:
260044D4
Reactivity:
human
GenBank:
NM_018269.3
Immunogen Catalog Number:
Eg5924

Conjugate:
Unconjugated
Full name:
acireductone dioxygenase 1
Gene ID:
55256

Detection Antibody Information

Catalog Number:
87964-3-PBS
Host:
Rabbit
Isotype:
IgG
Purification Method:
Protein A purification

Clone ID:
260044C2
Reactivity:
human
GenBank:
NM_018269.3
Immunogen Catalog Number:
Eg5924

Conjugate:
Unconjugated
Full name:
acireductone dioxygenase 1
Gene ID:
55256

Applications

Tested Applications:
Cytometric bead array

Range:
0.156-20 ng/mL (Cytometric Bead Array)

Recommended Dilutions:
It is recommended that this reagent should be titrated in each testing system to obtain optimal results.

Product Information

MP03295-1 targets ADI1 in immunoassays as a matched antibody pair. Validated in Cytometric bead array.

Capture antibody: ADI1 Recombinant monoclonal antibody, PBS Only (Capture) 87964-4-PBS (260044D4). 100 µg. Concentration 1 mg/mL.

Detection antibody: ADI1 Recombinant monoclonal antibody, PBS Only (Detector) 87964-3-PBS (260044C2). 100 µg. Concentration 1 mg/mL.

Unconjugated rabbit recombinant monoclonal antibody pair in PBS only storage buffer at a concentration of 1 mg/mL, ready for conjugation. Created using Proteintech's proprietary in-house recombinant technology. Recombinant production enables unrivalled batch-to-batch consistency, easy scale-up, and future security of supply.

Matched antibody pairs are designed for use in a variety of assays and platforms that require matched antibody pairs.

Antibody use should be optimized for each application and assay.

Storage

Storage:
Store at -80°C.
The product is shipped with ice packs. Upon receipt, store it immediately at -80°C
Storage buffer:
PBS only

For technical support and original validation data for this product please contact:

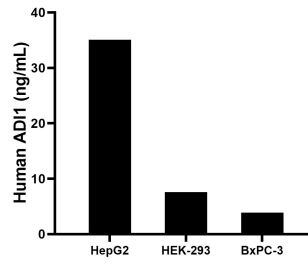
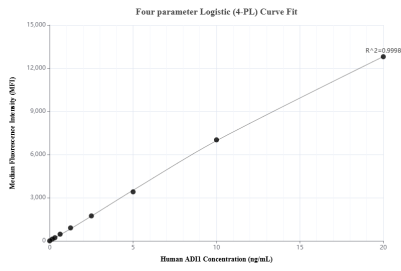
T: 4006900926

E: Proteintech-CN@ptglab.com

W: ptgcn.com

This product is exclusively available under Proteintech Group brand and is not available to purchase from any other manufacturer.

Selected Validation Data



Cytometric bead array standard curve of MP03295-1, ADI1 Recombinant Matched Antibody Pair, PBS Only. Capture antibody: 87964-4-PBS. Detection antibody: 87964-3-PBS. Standard: Eg5924. Range: 0.156-20 ng/mL

The mean ADI1 concentration was determined to be 35.1 ng/mL in HepG2 cell extract based on a 1.2 mg/mL extract load, 7.6 ng/mL in HEK-293 cell extract based on a 1.5 mg/mL extract load, 3.9 ng/mL in BxPC-3 cell extract based on a 1.2 mg/mL extract load.