

For Research Use Only

IFNW1 Recombinant Matched Antibody Pair, PBS Only



Catalog Number:MP03285-1

Capture Antibody Information

Catalog Number: 87318-3-PBS	Clone ID: 251487C12	Conjugate: Unconjugated
Host: Rabbit	Reactivity: human	Full name: interferon, omega 1
Isotype: IgG	GenBank: BC117292	Gene ID: 3467
Purification Method: Protein A purification	Immunogen Catalog Number: Eg5386	

Detection Antibody Information

Catalog Number: 87318-2-PBS	Clone ID: 251487A9	Conjugate: Unconjugated
Host: Rabbit	Reactivity: human	Full name: interferon, omega 1
Isotype: IgG	GenBank: BC117292	Gene ID: 3467
Purification Method: Protein A purification	Immunogen Catalog Number: Eg5386	

Applications

Tested Applications: Sandwich ELISA	Range: 31.3-1000 pg/mL (Sandwich ELISA)	Recommended Dilutions: It is recommended that this reagent should be titrated in each testing system to obtain optimal results.
---	---	---

Product Information

MP03285-1 targets IFNW1 in immunoassays as a matched antibody pair. Validated in Sandwich ELISA.

Capture antibody: IFNW1 Recombinant monoclonal antibody, PBS Only (Capture) 87318-3-PBS (251487C12). 100 µg. Concentration 1 mg/mL.

Detection antibody: IFNW1 Recombinant monoclonal antibody, PBS Only (Detector) 87318-2-PBS (251487A9). 100 µg. Concentration 1 mg/mL.

Unconjugated rabbit recombinant monoclonal antibody pair in PBS only storage buffer at a concentration of 1 mg/mL, ready for conjugation. Created using Proteintech's proprietary in-house recombinant technology. Recombinant production enables unrivalled batch-to-batch consistency, easy scale-up, and future security of supply.

Matched antibody pairs are designed for use in a variety of assays and platforms that require matched antibody pairs.

Antibody use should be optimized for each application and assay.

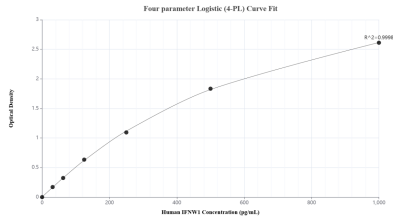
Storage

Storage:
Store at -80°C.
The product is shipped with ice packs. Upon receipt, store it immediately at -80°C
Storage buffer:
PBS only

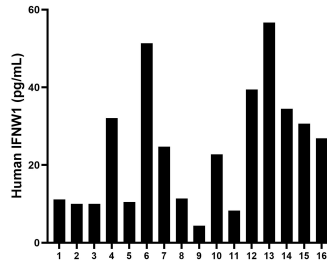
For technical support and original validation data for this product please contact:
T: 4006900926 E: Proteintech-CN@ptglab.com W: ptgcn.com

This product is exclusively available under Proteintech Group brand and is not available to purchase from any other manufacturer.

Selected Validation Data



Sandwich ELISA standard curve of MP03285-1, Human IFN1 Recombinant Matched Antibody Pair - PBS only. 87318-3-PBS was coated to a plate as the capture antibody and incubated with serial dilutions of standard Eg5386. 87318-2-PBS was HRP conjugated as the detection antibody. Range: 31.3-1000 pg/mL



Plasma of sixteen individual healthy human donors was measured. The IFN1 concentration of detected samples was determined to be 24.1 pg/mL with a range of 4.4-56.7 pg/mL