

For Research Use Only

# Claudin 11 Recombinant Matched Antibody Pair, PBS Only



Catalog Number:MP03284-1

## Capture Antibody Information

Catalog Number:  
87261-1-PBS

Host:  
Rabbit

Isotype:  
IgG

Purification Method:  
Protein A purification

Clone ID:  
251586C2

Reactivity:  
human

GenBank:  
BC013577

Conjugate:  
Unconjugated

Full name:  
claudin 11

Gene ID:  
5010

## Detection Antibody Information

Catalog Number:  
87261-2-PBS

Host:  
Rabbit

Isotype:  
IgG

Purification Method:  
Protein A purification

Clone ID:  
251586C1

Reactivity:  
human

GenBank:  
BC013577

Conjugate:  
Unconjugated

Full name:  
claudin 11

Gene ID:  
5010

## Applications

Tested Applications:  
Sandwich ELISA

Range:  
39.1-2500 pg/mL (Sandwich ELISA)

Recommended Dilutions:  
It is recommended that this reagent should be titrated in each testing system to obtain optimal results.

## Product Information

MP03284-1 targets Claudin 11 in immunoassays as a matched antibody pair. Validated in Sandwich ELISA.

Capture antibody: CLDN11 Recombinant monoclonal antibody, PBS Only (Capture) 87261-1-PBS (251586C2). 100  $\mu$ g. Concentration 1 mg/mL.

Detection antibody: CLDN11 Recombinant monoclonal antibody, PBS Only (Detector) 87261-2-PBS (251586C1). 100  $\mu$ g. Concentration 1 mg/mL.

Unconjugated rabbit recombinant monoclonal antibody pair in PBS only storage buffer at a concentration of 1 mg/mL, ready for conjugation. Created using Proteintech's proprietary in-house recombinant technology. Recombinant production enables unrivalled batch-to-batch consistency, easy scale-up, and future security of supply.

Matched antibody pairs are designed for use in a variety of assays and platforms that require matched antibody pairs.

Antibody use should be optimized for each application and assay.

## Storage

Storage:  
Store at -80°C.

The product is shipped with ice packs. Upon receipt, store it immediately at -80°C

Storage buffer:  
PBS only

For technical support and original validation data for this product please contact:

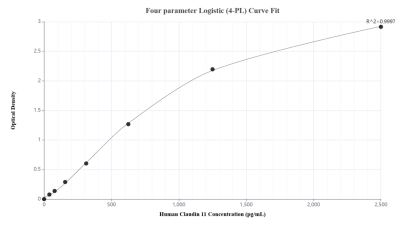
T: 4006900926

E: Proteintech-CN@ptglab.com

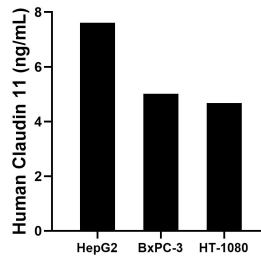
W: ptgcn.com

This product is exclusively available under Proteintech Group brand and is not available to purchase from any other manufacturer.

## Selected Validation Data



Sandwich ELISA standard curve of MP03284-1, Human Claudin 11 Recombinant Matched Antibody Pair - PBS only. 87261-1-PBS was coated to a plate as the capture antibody and incubated with serial dilutions of standard SY02670. 87261-2-PBS was HRP conjugated as the detection antibody. Range: 39.1-2500 pg/mL



The mean Claudin 11 concentration was determined to be 7.61 ng/mL in HepG2 cell extract based on a 1.20 mg/mL extract load, 5.01 ng/mL in BxPC-3 cell extract based on a 1.20 mg/mL extract load and 4.67 ng/mL in HT-1080 cell extract based on a 1.50 mg/mL extract load.