

PSG7 Recombinant Matched Antibody Pair, PBS Only

Catalog Number:MP03280-1

Capture Antibody Information

Catalog Number:
87954-2-PBS
Host:
Rabbit
Isotype:
IgG
Purification Method:
Protein A purification

Clone ID:
260017B1
Reactivity:
human
GenBank:
NM_002783.3
Immunogen Catalog Number:
Eg8784

Conjugate:
Unconjugated
Full name:
pregnancy specific beta-1-glycoprotein 7
Gene ID:
5676

Detection Antibody Information

Catalog Number:
87954-1-PBS
Host:
Rabbit
Isotype:
IgG
Purification Method:
Protein A purification

Clone ID:
260017B11
Reactivity:
human
GenBank:
NM_002783.3
Immunogen Catalog Number:
Eg8784

Conjugate:
Unconjugated
Full name:
pregnancy specific beta-1-glycoprotein 7
Gene ID:
5676

Applications

Tested Applications:
Cytometric bead array

Range:
0.156-20 ng/mL (Cytometric Bead Array)

Recommended Dilutions:
It is recommended that this reagent should be titrated in each testing system to obtain optimal results.

Product Information

MP03280-1 targets PSG7 in immunoassays as a matched antibody pair. Validated in Cytometric bead array.

Capture antibody: PSG7 Recombinant monoclonal antibody, PBS Only (Capture) 87954-2-PBS (260017B1). 100 µg. Concentration 1 mg/mL.

Detection antibody: PSG7 Recombinant monoclonal antibody, PBS Only (Detector) 87954-1-PBS (260017B11). 100 µg. Concentration 1 mg/mL.

Unconjugated rabbit recombinant monoclonal antibody pair in PBS only storage buffer at a concentration of 1 mg/mL, ready for conjugation. Created using Proteintech's proprietary in-house recombinant technology. Recombinant production enables unrivalled batch-to-batch consistency, easy scale-up, and future security of supply.

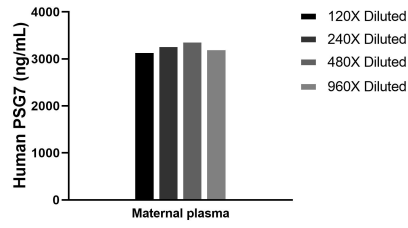
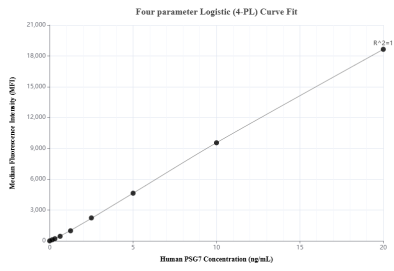
Matched antibody pairs are designed for use in a variety of assays and platforms that require matched antibody pairs.

Antibody use should be optimized for each application and assay.

Storage

Storage:
Store at -80°C.
The product is shipped with ice packs. Upon receipt, store it immediately at -80°C
Storage buffer:
PBS only

Selected Validation Data



Cytometric bead array standard curve of MP03280-1, PSG7 Recombinant Matched Antibody Pair, PBS Only. Capture antibody: 87954-2-PBS. Detection antibody: 87954-1-PBS. Standard: Eg8784. Range: 0.156-20 ng/mL

The mean PSG7 concentration was determined to be 3262.7 ng/mL in maternal plasma.