

For Research Use Only

CCDC88C Recombinant Matched Antibody Pair, PBS Only



Catalog Number:MP03275-1

Capture Antibody Information

Catalog Number:
87946-3-PBS

Host:
Rabbit

Isotype:
IgG

Purification Method:
Protein A purification

Clone ID:
260135B7

Reactivity:
human

GenBank:
BC028565

Immunogen Catalog Number:
Ag22711

Conjugate:
Unconjugated

Full name:
coiled-coil domain containing 88C

Gene ID:
440193

Detection Antibody Information

Catalog Number:
87946-2-PBS

Host:
Rabbit

Isotype:
IgG

Purification Method:
Protein A purification

Clone ID:
260135A11

Reactivity:
human

GenBank:
BC028565

Immunogen Catalog Number:
Ag22711

Conjugate:
Unconjugated

Full name:
coiled-coil domain containing 88C

Gene ID:
440193

Applications

Tested Applications:
Cytometric bead array

Range:
0.156-20 ng/mL (Cytometric Bead Array)

Recommended Dilutions:
It is recommended that this reagent should be titrated in each testing system to obtain optimal results.

Product Information

MP03275-1 targets CCDC88C in immunoassays as a matched antibody pair. Validated in Cytometric bead array.

Capture antibody: CCDC88C Recombinant monoclonal antibody, PBS Only (Capture) 87946-3-PBS (260135B7). 100 μ g. Concentration 1 mg/mL.

Detection antibody: CCDC88C Recombinant monoclonal antibody, PBS Only (Detector) 87946-2-PBS (260135A11). 100 μ g. Concentration 1 mg/mL.

Unconjugated rabbit recombinant monoclonal antibody pair in PBS only storage buffer at a concentration of 1 mg/mL, ready for conjugation. Created using Proteintech's proprietary in-house recombinant technology. Recombinant production enables unrivalled batch-to-batch consistency, easy scale-up, and future security of supply.

Matched antibody pairs are designed for use in a variety of assays and platforms that require matched antibody pairs.

Antibody use should be optimized for each application and assay.

Storage

Storage:
Store at -80°C.

The product is shipped with ice packs. Upon receipt, store it immediately at -80°C

Storage buffer:
PBS only

For technical support and original validation data for this product please contact:

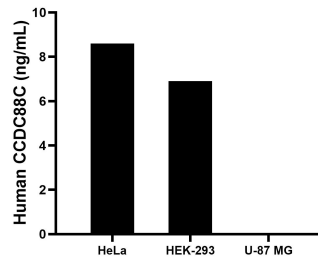
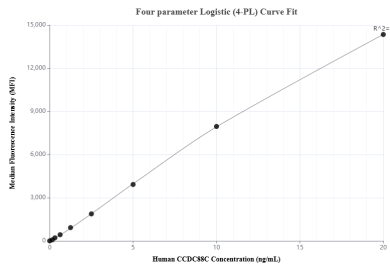
T: 4006900926

E: Proteintech-CN@ptglab.com

W: ptgcn.com

This product is exclusively available under Proteintech Group brand and is not available to purchase from any other manufacturer.

Selected Validation Data



Cytometric bead array standard curve of MP03275-1, CCDC88C Recombinant Matched Antibody Pair, PBS Only. Capture antibody: 87946-3-PBS. Detection antibody: 87946-2-PBS. Standard: Ag22711. Range: 0.156-20 ng/mL.

The mean CCDC88C concentration was determined to be 8.6 ng/mL in HeLa cell extract based on a 1.2 mg/mL extract load, 6.9 ng/mL in HEK-293 cell extract based on a 1.5 mg/mL extract load, U-87 MG cell extract were served as a negative control.