

For Research Use Only



# FBP1 Recombinant Matched Antibody Pair, PBS Only

Catalog Number:MP03257-1

## Capture Antibody Information

**Catalog Number:**  
87898-4-PBS  
**Host:**  
Rabbit  
**Isotype:**  
IgG  
**Purification Method:**  
Protein A purification

**Clone ID:**  
253535C8  
**Reactivity:**  
human  
**GenBank:**  
BC012927  
**Immunogen Catalog Number:**  
Ag3837

**Conjugate:**  
Unconjugated  
**Full name:**  
fructose-1,6-bisphosphatase 1  
**Gene ID:**  
2203

## Detection Antibody Information

**Catalog Number:**  
87898-3-PBS  
**Host:**  
Rabbit  
**Isotype:**  
IgG  
**Purification Method:**  
Protein A purification

**Clone ID:**  
253535E10  
**Reactivity:**  
human  
**GenBank:**  
BC012927  
**Immunogen Catalog Number:**  
Ag3837

**Conjugate:**  
Unconjugated  
**Full name:**  
fructose-1,6-bisphosphatase 1  
**Gene ID:**  
2203

## Applications

**Tested Applications:**  
Cytometric bead array

**Range:**  
0.781-100 ng/mL (Cytometric Bead Array)

**Recommended Dilutions:**  
It is recommended that this reagent should be titrated in each testing system to obtain optimal results.

## Product Information

MP03257-1 targets FBP1 in immunoassays as a matched antibody pair. Validated in Cytometric bead array.

Capture antibody: FBP1 Recombinant monoclonal antibody, PBS Only (Capture) 87898-4-PBS (253535C8). 100 µg. Concentration 1 mg/mL.

Detection antibody: FBP1 Recombinant monoclonal antibody, PBS Only (Detector) 87898-3-PBS (253535E10). 100 µg. Concentration 1 mg/mL.

Unconjugated rabbit recombinant monoclonal antibody pair in PBS only storage buffer at a concentration of 1 mg/mL, ready for conjugation. Created using Proteintech's proprietary in-house recombinant technology. Recombinant production enables unrivalled batch-to-batch consistency, easy scale-up, and future security of supply.

Matched antibody pairs are designed for use in a variety of assays and platforms that require matched antibody pairs.

Antibody use should be optimized for each application and assay.

## Storage

**Storage:**  
Store at -80°C.  
**The product is shipped with ice packs. Upon receipt, store it immediately at -80°C**  
**Storage buffer:**  
PBS only

For technical support and original validation data for this product please contact:

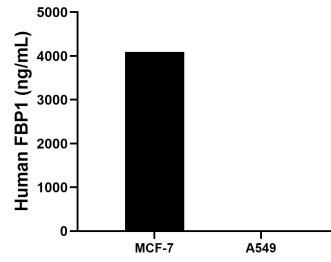
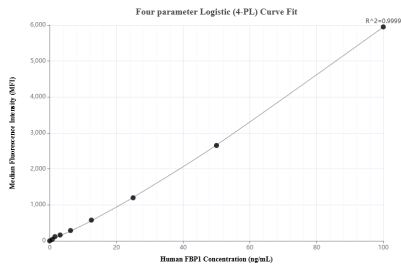
T: 4006900926

E: Proteintech-CN@ptglab.com

W: ptgcn.com

**This product is exclusively available under Proteintech Group brand and is not available to purchase from any other manufacturer.**

## Selected Validation Data



Cytometric bead array standard curve of MP03257-1, FBP1 Recombinant Matched Antibody Pair, PBS Only. Capture antibody: 87898-4-PBS. Detection antibody: 87898-3-PBS. Standard: Ag3837. Range: 0.781-100 ng/mL.

The mean FBP1 concentration was determined to be 4096.2 ng/mL in MCF-7 cell extract based on a 1.2 mg/mL extract load, A549 cell extract were served as a negative control.