

For Research Use Only

Mouse CD298/ATP1B3 Recombinant Matched Antibody Pair, PBS Only



Catalog Number:MP03255-1

Capture Antibody Information

Catalog Number:
87906-4-PBS

Host:
Rabbit

Isotype:
IgG

Purification Method:
Protein A purification

Clone ID:
260040C3

Reactivity:
mouse

GenBank:
NM_007502.6

Immunogen Catalog Number:
Eg8917

Conjugate:
Unconjugated

Full name:
ATPase, Na⁺/K⁺ transporting, beta 3 polypeptide

Gene ID:
11933

Detection Antibody Information

Catalog Number:
87906-3-PBS

Host:
Rabbit

Isotype:
IgG

Purification Method:
Protein A purification

Clone ID:
260040D7

Reactivity:
mouse

GenBank:
NM_007502.6

Immunogen Catalog Number:
Eg8917

Conjugate:
Unconjugated

Full name:
ATPase, Na⁺/K⁺ transporting, beta 3 polypeptide

Gene ID:
11933

Applications

Tested Applications:
Cytometric bead array

Range:
1.562-200 ng/mL (Cytometric Bead Array)

Recommended Dilutions:
It is recommended that this reagent should be titrated in each testing system to obtain optimal results.

Product Information

MP03255-1 targets CD298/ATP1B3 in immunoassays as a matched antibody pair. Validated in Cytometric bead array.

Capture antibody: Mouse CD298/ATP1B3 Recombinant monoclonal antibody, PBS Only (Capture) 87906-4-PBS (260040C3). 100 µg. Concentration 1 mg/mL.

Detection antibody: Mouse CD298/ATP1B3 Recombinant monoclonal antibody, PBS Only (Detector) 87906-3-PBS (260040D7). 100 µg. Concentration 1 mg/mL.

Unconjugated rabbit recombinant monoclonal antibody pair in PBS only storage buffer at a concentration of 1 mg/mL, ready for conjugation. Created using Proteintech's proprietary in-house recombinant technology. Recombinant production enables unrivalled batch-to-batch consistency, easy scale-up, and future security of supply.

Matched antibody pairs are designed for use in a variety of assays and platforms that require matched antibody pairs.

Antibody use should be optimized for each application and assay.

Storage

Storage:
Store at -80°C.

The product is shipped with ice packs. Upon receipt, store it immediately at -80°C

Storage buffer:
PBS only

For technical support and original validation data for this product please contact:

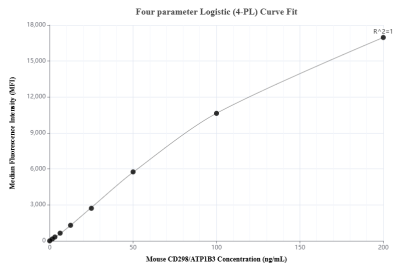
T: 4006900926

E: Proteintech-CN@ptglab.com

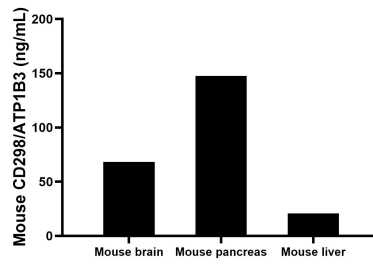
W: ptgcn.com

This product is exclusively available under Proteintech Group brand and is not available to purchase from any other manufacturer.

Selected Validation Data



Cytometric bead array standard curve of MP03255-1, MOUSE CD298/ATP1B3 Recombinant Matched Antibody Pair, PBS Only. Capture antibody: 87906-4-PBS. Detection antibody: 87906-3-PBS. Standard: Eg8917. Range: 1.562-200 ng/mL.



The mean CD298/ATP1B3 concentration was determined to be 68.3 ng/mL in mouse brain tissue extract based on a 1.0 mg/mL extract load, 147.6 ng/mL in mouse pancreas tissue extract based on a 1.0 mg/mL extract load, 20.8 ng/mL in mouse liver tissue extract based on a 1.0 mg/mL extract load.