

For Research Use Only

AP1B1 Recombinant Matched Antibody Pair, PBS Only



Catalog Number:MP03244-1

Capture Antibody Information

Catalog Number:
87859-3-PBS
Host:
Rabbit
Isotype:
IgG
Purification Method:
Protein A purification

Clone ID:
253524D12
Reactivity:
human
GenBank:
BC046242
Immunogen Catalog Number:
Ag10417

Conjugate:
Unconjugated
Full name:
adaptor-related protein complex 1, beta 1 subunit
Gene ID:
162

Detection Antibody Information

Catalog Number:
87859-2-PBS
Host:
Rabbit
Isotype:
IgG
Purification Method:
Protein A purification

Clone ID:
253524D8
Reactivity:
human
GenBank:
BC046242
Immunogen Catalog Number:
Ag10417

Conjugate:
Unconjugated
Full name:
adaptor-related protein complex 1, beta 1 subunit
Gene ID:
162

Applications

Tested Applications:
Cytometric bead array

Range:
0.312-40 ng/mL (Cytometric Bead Array)

Recommended Dilutions:
It is recommended that this reagent should be titrated in each testing system to obtain optimal results.

Product Information

MP03244-1 targets AP1B1 in immunoassays as a matched antibody pair. Validated in Cytometric bead array.

Capture antibody: AP1B1 Recombinant monoclonal antibody, PBS Only (Capture) 87859-3-PBS (253524D12). 100 µg. Concentration 1 mg/ml.

Detection antibody: AP1B1 Recombinant monoclonal antibody, PBS Only (Detector) 87859-2-PBS (253524D8). 100 µg. Concentration 1 mg/ml.

Unconjugated rabbit recombinant monoclonal antibody pair in PBS only storage buffer at a concentration of 1 mg/mL, ready for conjugation. Created using Proteintech's proprietary in-house recombinant technology. Recombinant production enables unrivalled batch-to-batch consistency, easy scale-up, and future security of supply.

Matched antibody pairs are designed for use in a variety of assays and platforms that require matched antibody pairs.

Antibody use should be optimized for each application and assay.

Storage

Storage:
Store at -80°C.
The product is shipped with ice packs. Upon receipt, store it immediately at -80°C
Storage buffer:
PBS only

For technical support and original validation data for this product please contact:

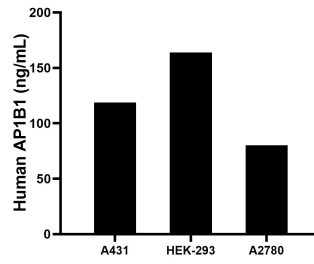
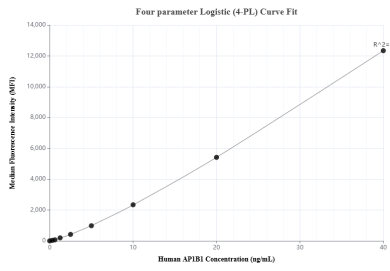
T: 4006900926

E: Proteintech-CN@ptglab.com

W: ptgcn.com

This product is exclusively available under Proteintech Group brand and is not available to purchase from any other manufacturer.

Selected Validation Data



Cytometric bead array standard curve of MP03244-1, AP1B1 Recombinant Matched Antibody Pair, PBS Only. Capture antibody: 87859-3-PBS. Detection antibody: 87859-2-PBS. Standard: Ag10417. Range: 0.312-40 ng/mL

The mean AP1B1 concentration was determined to be 118.8 ng/mL in A431 cell extract based on a 1.2 mg/mL extract load, 163.8 ng/mL in HEK-293 cell extract based on a 1.5 mg/mL extract load, 80.2 ng/mL in A2780 cell extract based on a 1.2 mg/mL extract load.