

For Research Use Only

CDR2 Recombinant Matched Antibody Pair, PBS Only



Catalog Number:MP03234-1

Capture Antibody Information

Catalog Number:
87868-1-PBS
Host:
Rabbit
Isotype:
IgG
Purification Method:
Protein A purification

Clone ID:
253563C10
Reactivity:
human
GenBank:
BC017503
Immunogen Catalog Number:
Ag24100

Conjugate:
Unconjugated
Full name:
cerebellar degeneration-related protein 2, 62kDa
Gene ID:
1039

Detection Antibody Information

Catalog Number:
87868-2-PBS
Host:
Rabbit
Isotype:
IgG
Purification Method:
Protein A purification

Clone ID:
253563C8
Reactivity:
human
GenBank:
BC017503
Immunogen Catalog Number:
Ag24100

Conjugate:
Unconjugated
Full name:
cerebellar degeneration-related protein 2, 62kDa
Gene ID:
1039

Applications

Tested Applications:
Cytometric bead array

Range:
0.781-100 ng/mL (Cytometric Bead Array)

Recommended Dilutions:
It is recommended that this reagent should be titrated in each testing system to obtain optimal results.

Product Information

MP03234-1 targets CDR2 in immunoassays as a matched antibody pair. Validated in Cytometric bead array.

Capture antibody: CDR2 Recombinant monoclonal antibody, PBS Only (Capture) 87868-1-PBS (253563C10). 100 μ g. Concentration 1 mg/mL.

Detection antibody: CDR2 Recombinant monoclonal antibody, PBS Only (Detector) 87868-2-PBS (253563C8). 100 μ g. Concentration 1 mg/mL.

Unconjugated rabbit recombinant monoclonal antibody pair in PBS only storage buffer at a concentration of 1 mg/mL, ready for conjugation. Created using Proteintech's proprietary in-house recombinant technology. Recombinant production enables unrivalled batch-to-batch consistency, easy scale-up, and future security of supply.

Matched antibody pairs are designed for use in a variety of assays and platforms that require matched antibody pairs.

Antibody use should be optimized for each application and assay.

Storage

Storage:
Store at -80°C.
The product is shipped with ice packs. Upon receipt, store it immediately at -80°C
Storage buffer:
PBS only

For technical support and original validation data for this product please contact:

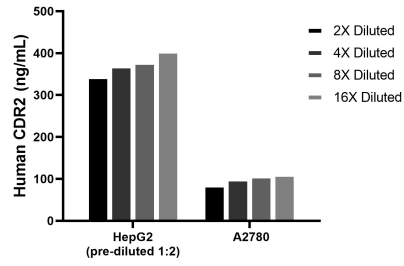
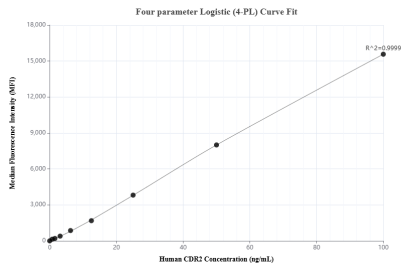
T: 4006900926

E: Proteintech-CN@ptglab.com

W: ptgcn.com

This product is exclusively available under Proteintech Group brand and is not available to purchase from any other manufacturer.

Selected Validation Data



Cytometric bead array standard curve of MP03234-1, CDR2 Recombinant Matched Antibody Pair, PBS Only. Capture antibody: 87868-1-PBS. Detection antibody: 87868-2-PBS. Standard: Ag24100. Range: 0.781-100 ng/mL.

The mean CDR2 concentration was determined to be 374.0 ng/mL in HepG2 cell extract based on a 1.5 mg/mL extract load, 100.6 ng/mL in A2780 cell extract based on a 1.2 mg/mL extract load.