

For Research Use Only



BMI1 Recombinant Matched Antibody Pair, PBS Only

Catalog Number:MP03232-2

Capture Antibody Information

Catalog Number:
87836-4-PBS
Host:
Rabbit
Isotype:
IgG
Purification Method:
Protein A purification

Clone ID:
253339E6
Reactivity:
human
GenBank:
BC011652
Immunogen Catalog Number:
Ag1286

Conjugate:
Unconjugated
Full name:
BMI1 polycomb ring finger oncogene
Gene ID:
648

Detection Antibody Information

Catalog Number:
87836-2-PBS
Host:
Rabbit
Isotype:
IgG
Purification Method:
Protein A purification

Clone ID:
253339H4
Reactivity:
human
GenBank:
BC011652
Immunogen Catalog Number:
Ag1286

Conjugate:
Unconjugated
Full name:
BMI1 polycomb ring finger oncogene
Gene ID:
648

Applications

Tested Applications:
Sandwich ELISA

Range:
0.156-10 ng/mL (Sandwich ELISA)

Recommended Dilutions:
It is recommended that this reagent should be titrated in each testing system to obtain optimal results.

Product Information

MP03232-2 targets BMI1 in immunoassays as a matched antibody pair. Validated in Sandwich ELISA.

Capture antibody: BMI1 Recombinant monoclonal antibody, PBS Only (Capture) 87836-4-PBS (253339E6). 100 µg. Concentration 1 mg/mL.

Detection antibody: BMI1 Recombinant monoclonal antibody, PBS Only (Detector) 87836-2-PBS (253339H4). 100 µg. Concentration 1 mg/mL.

Unconjugated rabbit recombinant monoclonal antibody pair in PBS only storage buffer at a concentration of 1 mg/mL, ready for conjugation. Created using Proteintech's proprietary in-house recombinant technology. Recombinant production enables unrivalled batch-to-batch consistency, easy scale-up, and future security of supply.

Matched antibody pairs are designed for use in a variety of assays and platforms that require matched antibody pairs.

Antibody use should be optimized for each application and assay.

Storage

Storage:
Store at -80°C.
The product is shipped with ice packs. Upon receipt, store it immediately at -80°C
Storage buffer:
PBS only

For technical support and original validation data for this product please contact:

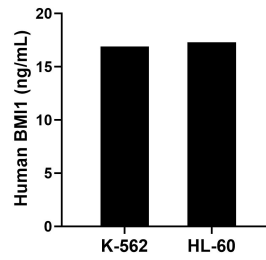
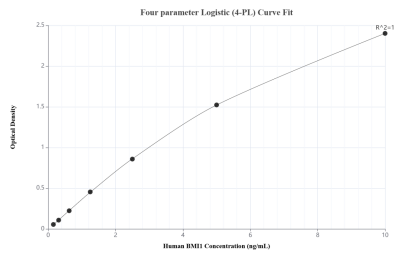
T: 4006900926

E: Proteintech-CN@ptglab.com

W: ptgcn.com

This product is exclusively available under Proteintech Group brand and is not available to purchase from any other manufacturer.

Selected Validation Data



Sandwich ELISA standard curve of MP03232-2, Human BMI 1 Recombinant Matched Antibody Pair - PBS only. 87836-4-PBS was coated to a plate as the capture antibody and incubated with serial dilutions of standard Ag1286. 87836-2-PBS was HRP conjugated as the detection antibody. Range: 0.156-10 ng/mL

The mean BMI 1 concentration was determined to be 16.90 ng/mL in K-562 cell extract based on a 1.20 mg/mL extract load and 17.30 ng/mL in HL-60 cell extract based on a 1.50 mg/mL extract load.