

For Research Use Only



TOP2A Recombinant Matched Antibody Pair, PBS Only

Catalog Number:MP03228-1

Capture Antibody Information

Catalog Number:
82738-15-PBS

Host:
Rabbit

Isotype:
IgG

Purification Method:
Protein A purification

Clone ID:
253104C7

Reactivity:
human

GenBank:
NM_001067

Conjugate:
Unconjugated

Full name:
topoisomerase (DNA) II alpha 170kDa

Gene ID:
7153

Detection Antibody Information

Catalog Number:
82738-14-PBS

Host:
Rabbit

Isotype:
IgG

Purification Method:
Protein A purification

Clone ID:
253104C10

Reactivity:
human

GenBank:
NM_001067

Conjugate:
Unconjugated

Full name:
topoisomerase (DNA) II alpha 170kDa

Gene ID:
7153

Applications

Tested Applications:
Sandwich ELISA

Range:
78.1-5000 pg/mL (Sandwich ELISA)

Recommended Dilutions:
It is recommended that this reagent should be titrated in each testing system to obtain optimal results.

Product Information

MP03228-1 targets TOP2A in immunoassays as a matched antibody pair. Validated in Sandwich ELISA.

Capture antibody: TOP2A-Specific Recombinant monoclonal antibody, PBS Only (Capture) 82738-15-PBS (253104C7). 100 µg. Concentration 1 mg/mL.

Detection antibody: TOP2A-Specific Recombinant monoclonal antibody, PBS Only (Detector) 82738-14-PBS (253104C10). 100 µg. Concentration 1 mg/mL.

Unconjugated rabbit recombinant monoclonal antibody pair in PBS only storage buffer at a concentration of 1 mg/mL, ready for conjugation. Created using Proteintech's proprietary in-house recombinant technology. Recombinant production enables unrivalled batch-to-batch consistency, easy scale-up, and future security of supply.

Matched antibody pairs are designed for use in a variety of assays and platforms that require matched antibody pairs.

Antibody use should be optimized for each application and assay.

Storage

Storage:

Store at -80°C.

The product is shipped with ice packs. Upon receipt, store it immediately at -80°C

Storage buffer:

PBS only

For technical support and original validation data for this product please contact:

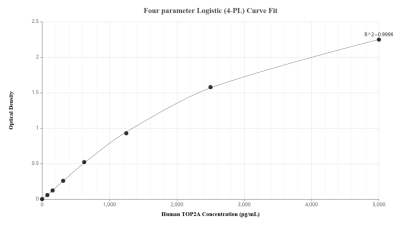
T: 4006900926

E: Proteintech-CN@ptglab.com

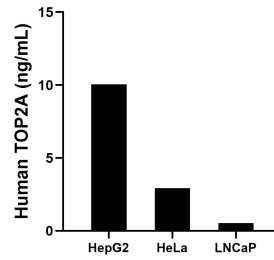
W: ptgcn.com

This product is exclusively available under Proteintech Group brand and is not available to purchase from any other manufacturer.

Selected Validation Data



Sandwich ELISA standard curve of MP03228-1, Human TOP2A Recombinant Matched Antibody Pair - PBS only. 82738-15-PBS was coated to a plate as the capture antibody and incubated with serial dilutions of standard SY00757. 82738-14-PBS was HRP conjugated as the detection antibody. Range: 78.1-5000 pg/mL



The mean TOP2A concentration was determined to be 10.0 ng/mL in HepG2 cell extract based on a 1.2 mg/mL extract load, 2.9 ng/mL in HeLa cell extract based on a 1.2 mg/mL extract load and 0.5 ng/mL in LNCaP cell extract based on a 1.2 mg/mL extract load.