

# CNTN1 Recombinant Matched Antibody Pair, PBS Only

Catalog Number:MP03227-1

## Capture Antibody Information

**Catalog Number:**

87612-2-PBS

**Host:**

Rabbit

**Isotype:**

IgG

**Purification Method:**

Protein A purification

**Clone ID:**

252906F7

**Reactivity:**

human

**GenBank:**

NM\_001843.3

**Immunogen Catalog Number:**

Eg6555

**Conjugate:**

Unconjugated

**Full name:**

contactin 1

**Gene ID:**

1272

## Detection Antibody Information

**Catalog Number:**

87612-1-PBS

**Host:**

Rabbit

**Isotype:**

IgG

**Purification Method:**

Protein A purification

**Clone ID:**

252906D4

**Reactivity:**

human, mouse, rat

**GenBank:**

NM\_001843.3

**Immunogen Catalog Number:**

Eg6555

**Conjugate:**

Unconjugated

**Full name:**

contactin 1

**Gene ID:**

1272

## Applications

**Tested Applications:**

Sandwich ELISA

**Range:**

7.81-500 ng/mL (Sandwich ELISA)

**Recommended Dilutions:**

It is recommended that this reagent should be titrated in each testing system to obtain optimal results.

## Product Information

MP03227-1 targets CNTN1 in immunoassays as a matched antibody pair. Validated in Sandwich ELISA.

Capture antibody: CNTN1 Recombinant monoclonal antibody, PBS Only (Capture) 87612-2-PBS (252906F7). 100 µg. Concentration 1 mg/mL.

Detection antibody: CNTN1 Recombinant monoclonal antibody, PBS Only (Detector) 87612-1-PBS (252906D4). 100 µg. Concentration 1 mg/mL.

Unconjugated rabbit recombinant monoclonal antibody pair in PBS only storage buffer at a concentration of 1 mg/mL, ready for conjugation. Created using Proteintech's proprietary in-house recombinant technology. Recombinant production enables unrivalled batch-to-batch consistency, easy scale-up, and future security of supply.

Matched antibody pairs are designed for use in a variety of assays and platforms that require matched antibody pairs.

Antibody use should be optimized for each application and assay.

## Storage

**Storage:**

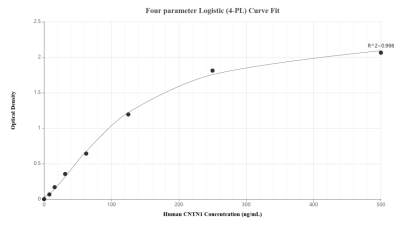
Store at -80°C.

The product is shipped with ice packs. Upon receipt, store it immediately at -80°C

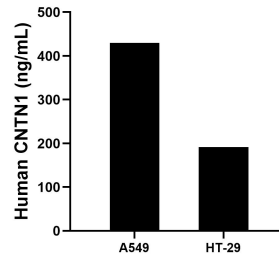
**Storage buffer:**

PBS only

## Selected Validation Data



Sandwich ELISA standard curve of MP03227-1, Human CNTN1 Recombinant Matched Antibody Pair - PBS only. 87612-2-PBS was coated to a plate as the capture antibody and incubated with serial dilutions of standard Eg6555. 87612-1-PBS was HRP conjugated as the detection antibody. Range: 7.81-500 ng/mL.



The mean CNTN1 concentration was determined to be 429.57 ng/mL in A549 cell extract based on a 1.20 mg/mL extract load and 191.70 ng/mL in HT-29 cell extract based on a 1.10 mg/mL extract load.