

For Research Use Only

# FCRL2 Recombinant Matched Antibody Pair, PBS Only



Catalog Number:MP03222-2

## Capture Antibody Information

**Catalog Number:**  
87834-1-PBS  
**Host:**  
Rabbit  
**Isotype:**  
IgG  
**Purification Method:**  
Protein A purification

**Clone ID:**  
253006D3  
**Reactivity:**  
human  
**GenBank:**  
NM\_030764.3  
**Immunogen Catalog Number:**  
Eg4773

**Conjugate:**  
Unconjugated  
**Full name:**  
Fc receptor-like 2  
**Gene ID:**  
79368

## Detection Antibody Information

**Catalog Number:**  
87834-3-PBS  
**Host:**  
Rabbit  
**Isotype:**  
IgG  
**Purification Method:**  
Protein A purification

**Clone ID:**  
253006C2  
**Reactivity:**  
human  
**GenBank:**  
NM\_030764.3  
**Immunogen Catalog Number:**  
Eg4773

**Conjugate:**  
Unconjugated  
**Full name:**  
Fc receptor-like 2  
**Gene ID:**  
79368

## Applications

**Tested Applications:**  
Sandwich ELISA

**Range:**  
78.1-5000 pg/mL (Sandwich ELISA)

**Recommended Dilutions:**  
It is recommended that this reagent should be titrated in each testing system to obtain optimal results.

## Product Information

MP03222-2 targets FCRL2 in immunoassays as a matched antibody pair. Validated in Sandwich ELISA.

Capture antibody: FCRL2 Recombinant monoclonal antibody, PBS Only (Capture/Detector) 87834-1-PBS (253006D3). 100 µg. Concentration 1 mg/mL.

Detection antibody: FCRL2 Recombinant monoclonal antibody, PBS Only (Detector) 87834-3-PBS (253006C2). 100 µg. Concentration 1 mg/mL.

Unconjugated rabbit recombinant monoclonal antibody pair in PBS only storage buffer at a concentration of 1 mg/mL, ready for conjugation. Created using Proteintech's proprietary in-house recombinant technology. Recombinant production enables unrivalled batch-to-batch consistency, easy scale-up, and future security of supply.

Matched antibody pairs are designed for use in a variety of assays and platforms that require matched antibody pairs.

Antibody use should be optimized for each application and assay.

## Storage

**Storage:**  
Store at -80°C.  
**The product is shipped with ice packs. Upon receipt, store it immediately at -80°C**  
**Storage buffer:**  
PBS only

For technical support and original validation data for this product please contact:

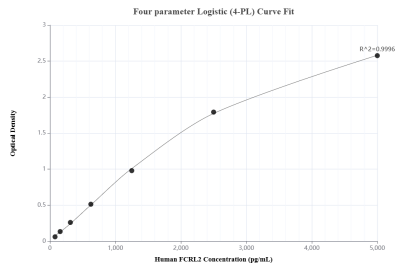
T: 4006900926

E: Proteintech-CN@ptglab.com

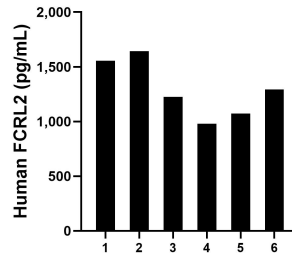
W: ptgcn.com

**This product is exclusively available under Proteintech Group brand and is not available to purchase from any other manufacturer.**

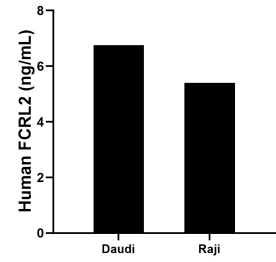
## Selected Validation Data



Sandwich ELISA standard curve of MP03222-2, Human FCRL2 Recombinant Matched Antibody Pair - PBS only. 87834-1-PBS was coated to a plate as the capture antibody and incubated with serial dilutions of standard Eg4773. 87834-3-PBS was HRP conjugated as the detection antibody. Range: 78.1-5000 pg/mL



Plasma of six individual healthy human donors was measured. The human FCRL2 concentration of detected samples was determined to be 1,294.6 pg/mL with a range of 980.1-1,641.9 pg/mL



The mean FCRL2 concentration was determined to be 6.75 ng/mL in Daudi cell extract based on a 1.2 mg/mL extract load and 5.41 ng/mL in Raji cell extract based on a 1.2 mg/mL extract load.