

For Research Use Only



Mouse IL-13Ra1/CD213a1 Recombinant Matched Antibody Pair, PBS Only

Catalog Number:MP03221-1

Capture Antibody Information

Catalog Number:
87816-2-PBS
Host:
Rabbit
Isotype:
IgG
Purification Method:
Protein A purification

Clone ID:
253331H5
Reactivity:
mouse
GenBank:
NM_133990.5
Immunogen Catalog Number:
Eg6217

Conjugate:
Unconjugated
Full name:
interleukin 13 receptor, alpha 1
Gene ID:
16164

Detection Antibody Information

Catalog Number:
87816-1-PBS
Host:
Rabbit
Isotype:
IgG
Purification Method:
Protein A purification

Clone ID:
253331D8
Reactivity:
mouse
GenBank:
NM_133990.5
Immunogen Catalog Number:
Eg6217

Conjugate:
Unconjugated
Full name:
interleukin 13 receptor, alpha 1
Gene ID:
16164

Applications

Tested Applications:
Cytometric bead array

Range:
0.312-40 ng/mL (Cytometric Bead Array)

Recommended Dilutions:
It is recommended that this reagent should be titrated in each testing system to obtain optimal results.

Product Information

MP03221-1 targets IL-13Ra1/CD213a1 in immunoassays as a matched antibody pair. Validated in Cytometric bead array.

Capture antibody: Mouse Il13ra1 Recombinant monoclonal antibody, PBS Only (Capture) 87816-2-PBS (253331H5). 100 µg. Concentration 1 mg/mL.

Detection antibody: Mouse Il13ra1 Recombinant monoclonal antibody, PBS Only (Detector) 87816-1-PBS (253331D8). 100 µg. Concentration 1 mg/mL.

Unconjugated rabbit recombinant monoclonal antibody pair in PBS only storage buffer at a concentration of 1 mg/mL, ready for conjugation. Created using Proteintech's proprietary in-house recombinant technology. Recombinant production enables unrivalled batch-to-batch consistency, easy scale-up, and future security of supply.

Matched antibody pairs are designed for use in a variety of assays and platforms that require matched antibody pairs.

Antibody use should be optimized for each application and assay.

Storage

Storage:
Store at -80°C.
The product is shipped with ice packs. Upon receipt, store it immediately at -80°C
Storage buffer:
PBS only

For technical support and original validation data for this product please contact:

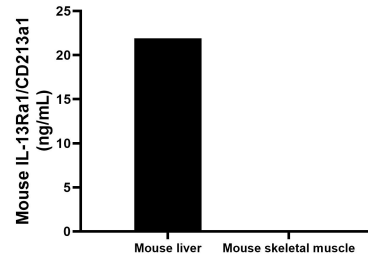
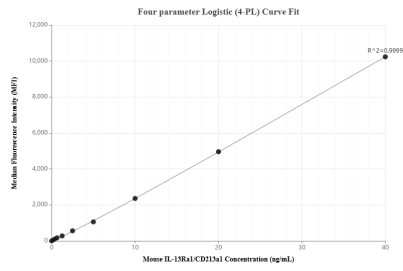
T: 4006900926

E: Proteintech-CN@ptglab.com

W: ptgcn.com

This product is exclusively available under Proteintech Group brand and is not available to purchase from any other manufacturer.

Selected Validation Data



Cytometric bead array standard curve of MP03221-1, MOUSE IL-13Ra1/CD213a1 Recombinant Matched Antibody Pair, PBS Only. Capture antibody: 87816-2-PBS. Detection antibody: 87816-1-PBS. Standard: Eg6217. Range: 0.312-40 ng/mL

The mean IL-13Ra1/CD213a1 concentration was determined to be 21.9 ng/mL in mouse liver tissue extract based on a 8.4 mg/mL extract load, mouse skeletal muscle tissue extract were served as a negative control.