

For Research Use Only

MLKL Recombinant Matched Antibody Pair, PBS Only



Catalog Number:MP03218-1

Capture Antibody Information

Catalog Number:
87741-1-PBS
Host:
Rabbit
Isotype:
IgG
Purification Method:
Protein A purification

Clone ID:
253011B11
Reactivity:
human
GenBank:
BC028141
Immunogen Catalog Number:
Ag15188

Conjugate:
Unconjugated
Full name:
mixed lineage kinase domain-like
Gene ID:
197259

Detection Antibody Information

Catalog Number:
87741-2-PBS
Host:
Rabbit
Isotype:
IgG
Purification Method:
Protein A purification

Clone ID:
253011H6
Reactivity:
human
GenBank:
BC028141
Immunogen Catalog Number:
Ag15188

Conjugate:
Unconjugated
Full name:
mixed lineage kinase domain-like
Gene ID:
197259

Applications

Tested Applications:
Sandwich ELISA

Range:
0.195-12.5 ng/mL (Sandwich ELISA)

Recommended Dilutions:
It is recommended that this reagent should be titrated in each testing system to obtain optimal results.

Product Information

MP03218-1 targets MLKL in immunoassays as a matched antibody pair. Validated in Sandwich ELISA.

Capture antibody: MLKL Recombinant monoclonal antibody, PBS Only (Capture) 87741-1-PBS (253011B11). 100 µg. Concentration 1 mg/mL.

Detection antibody: MLKL Recombinant monoclonal antibody, PBS Only (Detector) 87741-2-PBS (253011H6). 100 µg. Concentration 1 mg/mL.

Unconjugated rabbit recombinant monoclonal antibody pair in PBS only storage buffer at a concentration of 1 mg/mL, ready for conjugation. Created using Proteintech's proprietary in-house recombinant technology. Recombinant production enables unrivalled batch-to-batch consistency, easy scale-up, and future security of supply.

Matched antibody pairs are designed for use in a variety of assays and platforms that require matched antibody pairs.

Antibody use should be optimized for each application and assay.

Storage

Storage:
Store at -80°C.
The product is shipped with ice packs. Upon receipt, store it immediately at -80°C
Storage buffer:
PBS only

For technical support and original validation data for this product please contact:

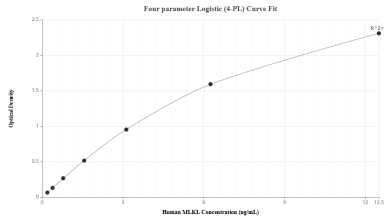
T: 4006900926

E: Proteintech-CN@ptglab.com

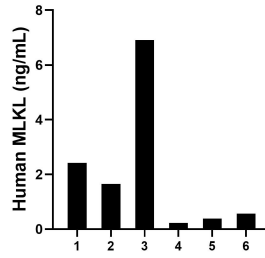
W: ptgcn.com

This product is exclusively available under Proteintech Group brand and is not available to purchase from any other manufacturer.

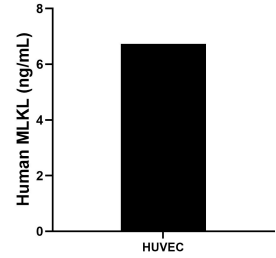
Selected Validation Data



Sandwich ELISA standard curve of MP03218-1, Human MLKL Recombinant Matched Antibody Pair - PBS only. 87741-1-PBS was coated to a plate as the capture antibody and incubated with serial dilutions of standard Ag15188. 87741-2-PBS was HRP conjugated as the detection antibody. Range: 0.195-12.5 ng/mL



Plasma of six individual healthy human donors was measured. The human MLKL concentration of detected samples was determined to be 2.02 ng/mL with a range of 0.22 - 6.91 ng/mL



The mean MLKL concentration was determined to be 6.73 ng/mL in HUVEC cell extract based on a 1.2 mg/mL extract load.