

For Research Use Only

MARCH5 Recombinant Matched Antibody Pair, PBS Only



Catalog Number:MP03206-1

Capture Antibody Information

Catalog Number:
87790-3-PBS
Host:
Rabbit
Isotype:
IgG
Purification Method:
Protein A purification

Clone ID:
253335F9
Reactivity:
human
GenBank:
BC015480
Immunogen Catalog Number:
Ag2806

Conjugate:
Unconjugated
Full name:
membrane-associated ring finger (C3HC4) 5
Gene ID:
54708

Detection Antibody Information

Catalog Number:
87790-2-PBS
Host:
Rabbit
Isotype:
IgG
Purification Method:
Protein A purification

Clone ID:
253335B10
Reactivity:
human
GenBank:
BC015480
Immunogen Catalog Number:
Ag2806

Conjugate:
Unconjugated
Full name:
membrane-associated ring finger (C3HC4) 5
Gene ID:
54708

Applications

Tested Applications:
Cytometric bead array

Range:
0.625-80 ng/mL (Cytometric Bead Array)

Recommended Dilutions:
It is recommended that this reagent should be titrated in each testing system to obtain optimal results.

Product Information

MP03206-1 targets MARCH5 in immunoassays as a matched antibody pair. Validated in Cytometric bead array.

Capture antibody: MARCH5 Recombinant monoclonal antibody, PBS Only (Capture) 87790-3-PBS (253335F9). 100 μ g. Concentration 1 mg/mL.

Detection antibody: MARCH5 Recombinant monoclonal antibody, PBS Only (Detector) 87790-2-PBS (253335B10). 100 μ g. Concentration 1 mg/mL.

Unconjugated rabbit recombinant monoclonal antibody pair in PBS only storage buffer at a concentration of 1 mg/mL, ready for conjugation. Created using Proteintech's proprietary in-house recombinant technology. Recombinant production enables unrivalled batch-to-batch consistency, easy scale-up, and future security of supply.

Matched antibody pairs are designed for use in a variety of assays and platforms that require matched antibody pairs.

Antibody use should be optimized for each application and assay.

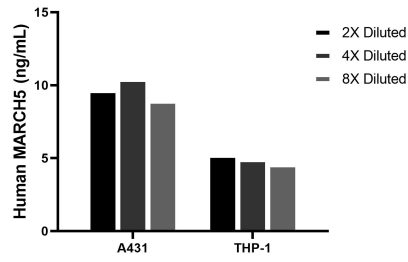
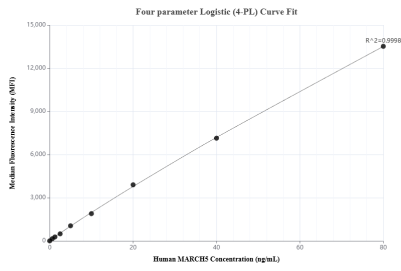
Storage

Storage:
Store at -80°C.
The product is shipped with ice packs. Upon receipt, store it immediately at -80°C
Storage buffer:
PBS only

For technical support and original validation data for this product please contact:
T: 4006900926 E: Proteintech-CN@ptglab.com W: ptgcn.com

This product is exclusively available under Proteintech Group brand and is not available to purchase from any other manufacturer.

Selected Validation Data



Cytometric bead array standard curve of MP03206-1, MARCH5 Recombinant Matched Antibody Pair, PBS Only. Capture antibody: 87790-3-PBS. Detection antibody: 87790-2-PBS. Standard: Ag2806. Range: 0.625-80 ng/mL.

The mean MARCH5 concentration was determined to be 9.6 ng/mL in A431 cell extract based on a 1.5 mg/mL extract load, 4.9 ng/mL in THP-1 cell extract based on a 1.2 mg/mL extract load.