

EDEM1 Recombinant Matched Antibody Pair, PBS Only

Catalog Number:MP03204-1

Capture Antibody Information

Catalog Number:
87789-1-PBS
Host:
Rabbit
Isotype:
IgG
Purification Method:
Protein A purification

Clone ID:
253376D2
Reactivity:
human, mouse
GenBank:
BC019088
Immunogen Catalog Number:
Ag41790

Conjugate:
Unconjugated
Full name:
ER degradation enhancer,
mannosidase alpha-like 1
Gene ID:
9695

Detection Antibody Information

Catalog Number:
87789-2-PBS
Host:
Rabbit
Isotype:
IgG
Purification Method:
Protein A purification

Clone ID:
253376A6
Reactivity:
human
GenBank:
BC019088
Immunogen Catalog Number:
Ag41790

Conjugate:
Unconjugated
Full name:
ER degradation enhancer,
mannosidase alpha-like 1
Gene ID:
9695

Applications

Tested Applications:
Cytometric bead array

Range:
0.469-60 ng/mL (Cytometric Bead Array)

Recommended Dilutions:
It is recommended that this reagent should be titrated in each testing system to obtain optimal results.

Product Information

MP03204-1 targets EDEM1 in immunoassays as a matched antibody pair. Validated in Cytometric bead array.

Capture antibody: EDEM1 Recombinant monoclonal antibody, PBS Only (Capture) 87789-1-PBS (253376D2). 100 µg. Concentration 1 mg/mL.

Detection antibody: EDEM1 Recombinant monoclonal antibody, PBS Only (Detector) 87789-2-PBS (253376A6). 100 µg. Concentration 1 mg/mL.

Unconjugated rabbit recombinant monoclonal antibody pair in PBS only storage buffer at a concentration of 1 mg/mL, ready for conjugation. Created using Proteintech's proprietary in-house recombinant technology. Recombinant production enables unrivalled batch-to-batch consistency, easy scale-up, and future security of supply.

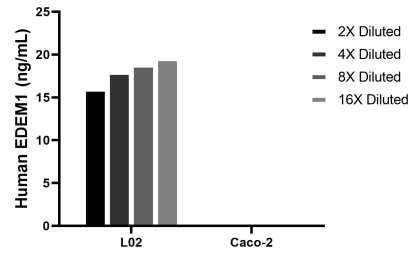
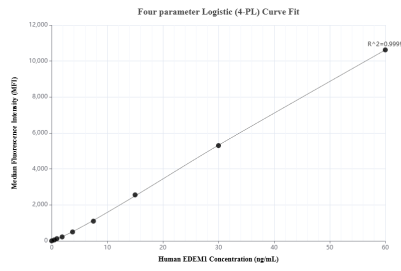
Matched antibody pairs are designed for use in a variety of assays and platforms that require matched antibody pairs.

Antibody use should be optimized for each application and assay.

Storage

Storage:
Store at -80°C.
The product is shipped with ice packs. Upon receipt, store it immediately at -80°C
Storage buffer:
PBS only

Selected Validation Data



Cytometric bead array standard curve of MP03204-1, EDEM1 Recombinant Matched Antibody Pair, PBS Only. Capture antibody: 87789-1-PBS. Detection antibody: 87789-2-PBS. Standard: Ag41790. Range: 0.469-60 ng/mL

The mean EDEM1 concentration was determined to be 18.0 ng/mL in L02 cell extract based on a 1.2 mg/mL extract load, Caco-2 cell extract were served as a negative control.