

For Research Use Only

Mouse ORM1 Recombinant Matched Antibody Pair, PBS Only



Catalog Number:MP03203-2

Capture Antibody Information

Catalog Number:
87784-5-PBS
Host:
Rabbit
Isotype:
IgG
Purification Method:
Protein A purification

Clone ID:
253420C5
Reactivity:
mouse
GenBank:
NM_008768.2
Immunogen Catalog Number:
Eg2752

Conjugate:
Unconjugated
Full name:
orosomucoid 1
Gene ID:
18405

Detection Antibody Information

Catalog Number:
87784-4-PBS
Host:
Rabbit
Isotype:
IgG
Purification Method:
Protein A purification

Clone ID:
253420B5
Reactivity:
mouse
GenBank:
NM_008768.2
Immunogen Catalog Number:
Eg2752

Conjugate:
Unconjugated
Full name:
orosomucoid 1
Gene ID:
18405

Applications

Tested Applications:
Sandwich ELISA

Range:
19.5-1250 pg/mL (Sandwich ELISA)

Recommended Dilutions:
It is recommended that this reagent should be titrated in each testing system to obtain optimal results.

Product Information

MP03203-2 targets ORM1 in immunoassays as a matched antibody pair. Validated in Sandwich ELISA.

Capture antibody: Mouse ORM1 Recombinant monoclonal antibody, PBS Only (Capture) 87784-5-PBS (253420C5). 100 µg. Concentration 1 mg/mL.

Detection antibody: Mouse ORM1 Recombinant monoclonal antibody, PBS Only (Detector) 87784-4-PBS (253420B5). 100 µg. Concentration 1 mg/mL.

Unconjugated rabbit recombinant monoclonal antibody pair in PBS only storage buffer at a concentration of 1 mg/mL, ready for conjugation. Created using Proteintech's proprietary in-house recombinant technology. Recombinant production enables unrivalled batch-to-batch consistency, easy scale-up, and future security of supply.

Matched antibody pairs are designed for use in a variety of assays and platforms that require matched antibody pairs.

Antibody use should be optimized for each application and assay.

Storage

Storage:
Store at -80°C.
The product is shipped with ice packs. Upon receipt, store it immediately at -80°C
Storage buffer:
PBS only

For technical support and original validation data for this product please contact:

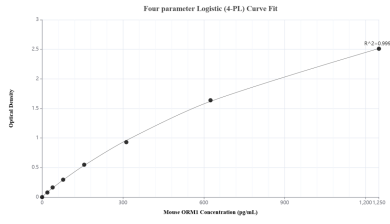
T: 4006900926

E: Proteintech-CN@ptglab.com

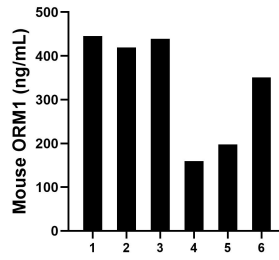
W: ptgcn.com

This product is exclusively available under Proteintech Group brand and is not available to purchase from any other manufacturer.

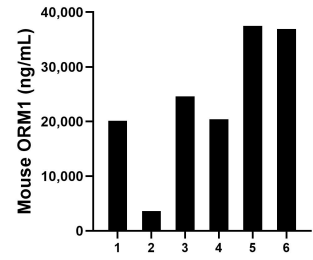
Selected Validation Data



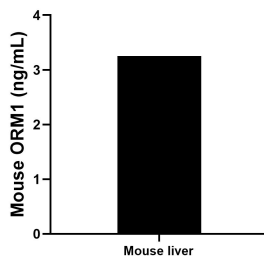
Sandwich ELISA standard curve of MP03203-2, Mouse ORM1 Recombinant Matched Antibody Pair - PBS only. 87784-5-PBS was coated to a plate as the capture antibody and incubated with serial dilutions of standard Eg2752. 87784-4-PBS was HRP conjugated as the detection antibody. Range: 19.5-1250 pg/mL



Urine of six mice was measured. The ORM1 concentration of detected samples was determined to be 335.2 ng/mL with a range of 159.7-445.4 ng/mL



Serum of six mice was measured. The ORM1 concentration of detected samples was determined to be 23,857.2 ng/mL with a range of 3,641.4-37,462.8 ng/mL



Mouse liver tissue from one adult mouse (chopped in 1-2 mm pieces in 30 mL of medium) were cultured in RPMI supplemented with 10% fetal bovine serum and 50 μ M β -mercaptoethanol. Aliquots of the cell culture supernates were removed, assayed for levels of mouse ORM1, and measured 3.2 ng/mL