

For Research Use Only

MAN2A1 Recombinant Matched Antibody Pair, PBS Only



Catalog Number:MP03195-1

Capture Antibody Information

Catalog Number:
87763-2-PBS
Host:
Rabbit
Isotype:
IgG
Purification Method:
Protein A purification

Clone ID:
253254D5
Reactivity:
human
GenBank:
BC142656
Immunogen Catalog Number:
Ag15536

Conjugate:
Unconjugated
Full name:
mannosidase, alpha, class 2A, member 1
Gene ID:
4124

Detection Antibody Information

Catalog Number:
87763-1-PBS
Host:
Rabbit
Isotype:
IgG
Purification Method:
Protein A purification

Clone ID:
253254B2
Reactivity:
human
GenBank:
BC142656
Immunogen Catalog Number:
Ag15536

Conjugate:
Unconjugated
Full name:
mannosidase, alpha, class 2A, member 1
Gene ID:
4124

Applications

Tested Applications:
Cytometric bead array

Range:
1.25-80 ng/mL (Cytometric Bead Array)

Recommended Dilutions:
It is recommended that this reagent should be titrated in each testing system to obtain optimal results.

Product Information

MP03195-1 targets MAN2A1 in immunoassays as a matched antibody pair. Validated in Cytometric bead array.

Capture antibody: MAN2A1 Recombinant monoclonal antibody, PBS Only (Capture) 87763-2-PBS (253254D5). 100 µg. Concentration 1 mg/mL.

Detection antibody: MAN2A1 Recombinant monoclonal antibody, PBS Only (Detector) 87763-1-PBS (253254B2). 100 µg. Concentration 1 mg/mL.

Unconjugated rabbit recombinant monoclonal antibody pair in PBS only storage buffer at a concentration of 1 mg/mL, ready for conjugation. Created using Proteintech's proprietary in-house recombinant technology. Recombinant production enables unrivalled batch-to-batch consistency, easy scale-up, and future security of supply.

Matched antibody pairs are designed for use in a variety of assays and platforms that require matched antibody pairs.

Antibody use should be optimized for each application and assay.

Storage

Storage:
Store at -80°C.
The product is shipped with ice packs. Upon receipt, store it immediately at -80°C
Storage buffer:
PBS only

For technical support and original validation data for this product please contact:

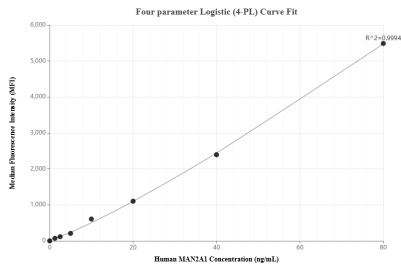
T: 4006900926

E: Proteintech-CN@ptglab.com

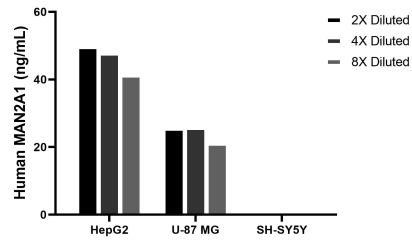
W: ptgcn.com

This product is exclusively available under Proteintech Group brand and is not available to purchase from any other manufacturer.

Selected Validation Data



Cytometric bead array standard curve of MP03195-1, MAN2A1 Recombinant Matched Antibody Pair, PBS Only. Capture antibody: 87763-2-PBS. Detection antibody: 87763-1-PBS. Standard: Ag15536. Range: 1.25-80 ng/mL.



The mean MAN2A1 concentration was determined to be 46.2 ng/mL in HepG2 cell extract based on a 1.2 mg/mL extract load, 24.1 ng/mL in U-87 MG cell extract based on a 1.2 mg/mL extract load, SH-SY5Y cell extract were served as a negative control.