

For Research Use Only

Mouse CD300a Recombinant Matched Antibody Pair, PBS Only



Catalog Number:MP03183-1

Capture Antibody Information

Catalog Number:
87050-2-PBS
Host:
Rabbit
Isotype:
IgG
Purification Method:
Protein A purification

Clone ID:
251972B2
Reactivity:
mouse
GenBank:
Immunogen Catalog Number:
Eg2675

Conjugate:
Unconjugated
Full name:
CD300A antigen
Gene ID:
217303

Detection Antibody Information

Catalog Number:
87050-1-PBS
Host:
Rabbit
Isotype:
IgG
Purification Method:
Protein A purification

Clone ID:
251972C10
Reactivity:
mouse, rat
GenBank:
Immunogen Catalog Number:
Eg2675

Conjugate:
Unconjugated
Full name:
CD300A antigen
Gene ID:
217303

Applications

Tested Applications:
Sandwich ELISA

Range:
1.56-100 ng/mL (Sandwich ELISA)

Recommended Dilutions:
It is recommended that this reagent should be titrated in each testing system to obtain optimal results.

Product Information

MP03183-1 targets CD300a in immunoassays as a matched antibody pair. Validated in Sandwich ELISA.

Capture antibody: Mouse CD300a Recombinant monoclonal antibody, PBS Only (Capture) 87050-2-PBS (251972B2). 100 µg. Concentration 1 mg/mL.

Detection antibody: Mouse CD300a Recombinant monoclonal antibody, PBS Only (Detector) 87050-1-PBS (251972C10). 100 µg. Concentration 1 mg/mL.

Unconjugated rabbit recombinant monoclonal antibody pair in PBS only storage buffer at a concentration of 1 mg/mL, ready for conjugation. Created using Proteintech's proprietary in-house recombinant technology. Recombinant production enables unrivalled batch-to-batch consistency, easy scale-up, and future security of supply.

Matched antibody pairs are designed for use in a variety of assays and platforms that require matched antibody pairs.

Antibody use should be optimized for each application and assay.

Storage

Storage:
Store at -80°C.
The product is shipped with ice packs. Upon receipt, store it immediately at -80°C
Storage buffer:
PBS only

For technical support and original validation data for this product please contact:

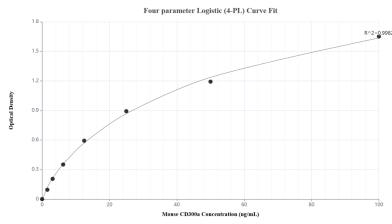
T: 4006900926

E: Proteintech-CN@ptglab.com

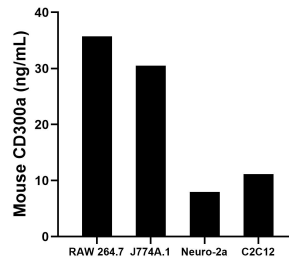
W: ptgcn.com

This product is exclusively available under Proteintech Group brand and is not available to purchase from any other manufacturer.

Selected Validation Data



Sandwich ELISA standard curve of MP03183-1, Mouse CD300a Recombinant Matched Antibody Pair - PBS only. 87050-2-PBS was coated to a plate as the capture antibody and incubated with serial dilutions of standard Eg2675. 87050-1-PBS was HRP conjugated as the detection antibody. Range: 1.56-100 ng/mL



The mean CD300a concentration was determined to be 35.71 ng/mL in RAW 264.7 cell extract based on a 1.20 mg/mL extract load, 30.51 ng/mL in J774A.1 cell extract based on a 1.30 mg/mL extract load, 7.96 ng/mL in Neuro-2a cell extract based on a 1.20 mg/mL extract load and 11.16 ng/mL in C2C12 cell extract based on a 1.10 mg/mL extract load.