

For Research Use Only

# PSG1 Recombinant Matched Antibody Pair, PBS Only



Catalog Number:MP03180-1

## Capture Antibody Information

Catalog Number:  
87751-2-PBS

Host:  
Rabbit

Isotype:  
IgG

Purification Method:  
Protein A purification

Clone ID:  
253347B6

Reactivity:  
human

GenBank:  
BC058285

Immunogen Catalog Number:  
Eg3704

Conjugate:  
Unconjugated

Full name:  
pregnancy specific beta-1-  
glycoprotein 1

Gene ID:  
5669

## Detection Antibody Information

Catalog Number:  
87751-1-PBS

Host:  
Rabbit

Isotype:  
IgG

Purification Method:  
Protein A purification

Clone ID:  
253347D11

Reactivity:  
human

GenBank:  
BC058285

Immunogen Catalog Number:  
Eg3704

Conjugate:  
Unconjugated

Full name:  
pregnancy specific beta-1-  
glycoprotein 1

Gene ID:  
5669

## Applications

Tested Applications:  
Cytometric bead array

Range:  
0.312-40 ng/mL (Cytometric Bead  
Array)

Recommended Dilutions:  
It is recommended that this reagent  
should be titrated in each testing  
system to obtain optimal results.

## Product Information

MP03180-1 targets PSG1 in immunoassays as a matched antibody pair. Validated in Cytometric bead array.

Capture antibody: PSG1 Recombinant monoclonal antibody, PBS Only (Capture) 87751-2-PBS (253347B6). 100  $\mu$ g. Concentration 1 mg/mL.

Detection antibody: PSG1 Recombinant monoclonal antibody, PBS Only (Detector) 87751-1-PBS (253347D11). 100  $\mu$ g. Concentration 1 mg/mL.

Unconjugated rabbit recombinant monoclonal antibody pair in PBS only storage buffer at a concentration of 1 mg/mL, ready for conjugation. Created using Proteintech's proprietary in-house recombinant technology. Recombinant production enables unrivalled batch-to-batch consistency, easy scale-up, and future security of supply.

Matched antibody pairs are designed for use in a variety of assays and platforms that require matched antibody pairs.

Antibody use should be optimized for each application and assay.

## Storage

Storage:  
Store at -80°C.

The product is shipped with ice packs. Upon receipt, store it immediately at -80°C

Storage buffer:  
PBS only

For technical support and original validation data for this product please contact:

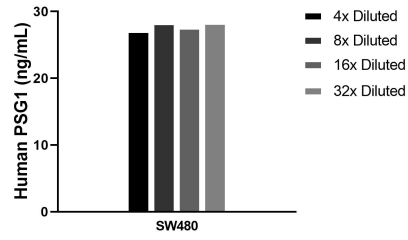
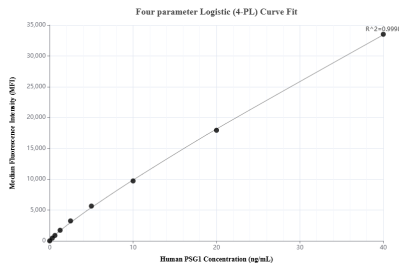
T: 4006900926

E: Proteintech-CN@ptglab.com

W: ptgcn.com

This product is exclusively available under Proteintech Group brand and is not available to purchase from any other manufacturer.

## Selected Validation Data



Cytometric bead array standard curve of MP03180-1, PSG1 Recombinant Matched Antibody Pair, PBS Only. Capture antibody: 87751-2-PBS. Detection antibody: 87751-1-PBS. Standard: Eg3704. Range: 0.312-40 ng/mL

SW480 were cultured in DMEM supplemented with 10% fetal bovine serum, 2.5 mM L-glutamine, 100 U/mL penicillin, and 100 ug/mL streptomycin sulfate. An aliquot of the cell culture supernatants was removed, assayed for human PSG1, and measured 27.8 ng/mL.