

For Research Use Only

Mouse IGF-II R/IGF2R Recombinant Matched Antibody Pair, PBS Only



Catalog Number:MP03179-1

Capture Antibody Information

Catalog Number:
87733-2-PBS
Host:
Rabbit
Isotype:
IgG
Purification Method:
Protein A purification

Clone ID:
253081C6
Reactivity:
mouse
GenBank:
NM_010515.2
Immunogen Catalog Number:
Eg6300

Conjugate:
Unconjugated
Full name:
insulin-like growth factor 2 receptor
Gene ID:
16004

Detection Antibody Information

Catalog Number:
87733-1-PBS
Host:
Rabbit
Isotype:
IgG
Purification Method:
Protein A purification

Clone ID:
253081C9
Reactivity:
mouse
GenBank:
NM_010515.2
Immunogen Catalog Number:
Eg6300

Conjugate:
Unconjugated
Full name:
insulin-like growth factor 2 receptor
Gene ID:
16004

Applications

Tested Applications:
Cytometric bead array

Range:
0.625-80 ng/mL (Cytometric Bead Array)

Recommended Dilutions:
It is recommended that this reagent should be titrated in each testing system to obtain optimal results.

Product Information

MP03179-1 targets IGF-II R/IGF2R in immunoassays as a matched antibody pair. Validated in Cytometric bead array.

Capture antibody: Mouse CD222/Igf2r Recombinant monoclonal antibody, PBS Only (Capture) 87733-2-PBS (253081C6). 100 µg. Concentration 1 mg/mL.

Detection antibody: Mouse CD222/Igf2r Recombinant monoclonal antibody, PBS Only (Detector) 87733-1-PBS (253081C9). 100 µg. Concentration 1 mg/mL.

Unconjugated rabbit recombinant monoclonal antibody pair in PBS only storage buffer at a concentration of 1 mg/mL, ready for conjugation. Created using Proteintech's proprietary in-house recombinant technology. Recombinant production enables unrivalled batch-to-batch consistency, easy scale-up, and future security of supply.

Matched antibody pairs are designed for use in a variety of assays and platforms that require matched antibody pairs.

Antibody use should be optimized for each application and assay.

Storage

Storage:
Store at -80°C.
The product is shipped with ice packs. Upon receipt, store it immediately at -80°C
Storage buffer:
PBS only

For technical support and original validation data for this product please contact:

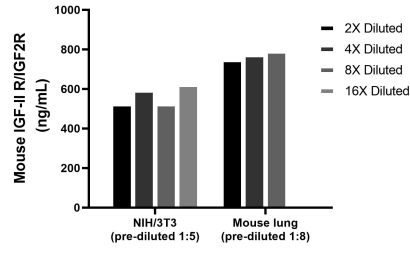
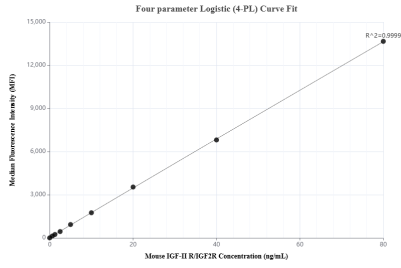
T: 4006900926

E: Proteintech-CN@ptglab.com

W: ptgcn.com

This product is exclusively available under Proteintech Group brand and is not available to purchase from any other manufacturer.

Selected Validation Data



Cytometric bead array standard curve of MP03179-1, MOUSE IGF-II R/IGF2R Recombinant Matched Antibody Pair, PBS Only. Capture antibody: 87733-2-PBS. Detection antibody: 87733-1-PBS. Standard: Eg6300. Range: 0.625-80 ng/mL

The mean IGF-II R/IGF2R concentration was determined to be 565.1 ng/mL in NIH/3T3 cell extract based on a 1.5 mg/mL extract load, 769.7 ng/mL in mouse lung tissue extract based on a 5.0 mg/mL extract load.