

For Research Use Only

# HRH1 Recombinant Matched Antibody Pair, PBS Only



Catalog Number:MP03173-1

## Capture Antibody Information

Catalog Number:  
87723-2-PBS

Host:  
Rabbit

Isotype:  
IgG

Purification Method:  
Protein A purification

Clone ID:  
253277A11

Reactivity:  
human

GenBank:  
BC060802

Immunogen Catalog Number:  
Ag30464

Conjugate:  
Unconjugated

Full name:  
histamine receptor H1

Gene ID:  
3269

## Detection Antibody Information

Catalog Number:  
87723-1-PBS

Host:  
Rabbit

Isotype:  
IgG

Purification Method:  
Protein A purification

Clone ID:  
253277E3

Reactivity:  
human

GenBank:  
BC060802

Immunogen Catalog Number:  
Ag30464

Conjugate:  
Unconjugated

Full name:  
histamine receptor H1

Gene ID:  
3269

## Applications

Tested Applications:  
Cytometric bead array

Range:  
0.625-80 ng/mL (Cytometric Bead Array)

Recommended Dilutions:  
It is recommended that this reagent should be titrated in each testing system to obtain optimal results.

## Product Information

MP03173-1 targets HRH1 in immunoassays as a matched antibody pair. Validated in Cytometric bead array.

Capture antibody: HRH1 Recombinant monoclonal antibody, PBS Only (Capture) 87723-2-PBS (253277A11). 100  $\mu$ g. Concentration 1 mg/mL.

Detection antibody: HRH1 Recombinant monoclonal antibody, PBS Only (Detector) 87723-1-PBS (253277E3). 100  $\mu$ g. Concentration 1 mg/mL.

Unconjugated rabbit recombinant monoclonal antibody pair in PBS only storage buffer at a concentration of 1 mg/mL, ready for conjugation. Created using Proteintech's proprietary in-house recombinant technology. Recombinant production enables unrivalled batch-to-batch consistency, easy scale-up, and future security of supply.

Matched antibody pairs are designed for use in a variety of assays and platforms that require matched antibody pairs.

Antibody use should be optimized for each application and assay.

## Storage

Storage:  
Store at -80°C.

The product is shipped with ice packs. Upon receipt, store it immediately at -80°C

Storage buffer:  
PBS only

For technical support and original validation data for this product please contact:

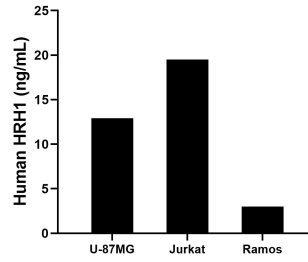
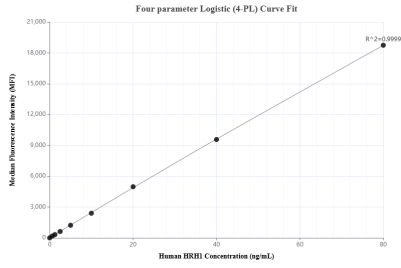
T: 4006900926

E: Proteintech-CN@ptglab.com

W: ptgcn.com

This product is exclusively available under Proteintech Group brand and is not available to purchase from any other manufacturer.

## Selected Validation Data



Cytometric bead array standard curve of MP03173-1, HRH1 Recombinant Matched Antibody Pair, PBS Only. Capture antibody: 87723-2-PBS. Detection antibody: 87723-1-PBS. Standard: Ag30464. Range: 0.625-80 ng/mL

The mean HRH1 concentration was determined to be 12.9 ng/mL in U-87MG cell extract based on a 1.2 mg/mL extract load, 19.5 ng/mL in Jurkat cell extract based on a 1.2 mg/mL extract load, 3.0 ng/mL in Ramos cell extract based on a 1.5 mg/mL extract load.