

For Research Use Only

CIB1 Recombinant Matched Antibody Pair, PBS Only



Catalog Number:MP03171-2

Capture Antibody Information

Catalog Number:
87697-3-PBS
Host:
Rabbit
Isotype:
IgG
Purification Method:
Protein A purification

Clone ID:
253241B12
Reactivity:
human
GenBank:
NM_006384.3
Immunogen Catalog Number:
Eg5476

Conjugate:
Unconjugated
Full name:
calcium and integrin binding 1 (calmyrin)
Gene ID:
10519

Detection Antibody Information

Catalog Number:
87697-4-PBS
Host:
Rabbit
Isotype:
IgG
Purification Method:
Protein A purification

Clone ID:
253241F10
Reactivity:
human
GenBank:
NM_006384.3
Immunogen Catalog Number:
Eg5476

Conjugate:
Unconjugated
Full name:
calcium and integrin binding 1 (calmyrin)
Gene ID:
10519

Applications

Tested Applications:
Sandwich ELISA

Range:
39.1-2500 pg/mL (Sandwich ELISA)

Recommended Dilutions:
It is recommended that this reagent should be titrated in each testing system to obtain optimal results.

Product Information

MP03171-2 targets CIB1 in immunoassays as a matched antibody pair. Validated in Sandwich ELISA.

Capture antibody: CIB1 Recombinant monoclonal antibody, PBS Only (Capture) 87697-3-PBS (253241B12). 100 µg. Concentration 1 mg/mL.

Detection antibody: CIB1 Recombinant monoclonal antibody, PBS Only (Detector) 87697-4-PBS (253241F10). 100 µg. Concentration 1 mg/mL.

Unconjugated rabbit recombinant monoclonal antibody pair in PBS only storage buffer at a concentration of 1 mg/mL, ready for conjugation. Created using Proteintech's proprietary in-house recombinant technology. Recombinant production enables unrivalled batch-to-batch consistency, easy scale-up, and future security of supply.

Matched antibody pairs are designed for use in a variety of assays and platforms that require matched antibody pairs.

Antibody use should be optimized for each application and assay.

Storage

Storage:
Store at -80°C.
The product is shipped with ice packs. Upon receipt, store it immediately at -80°C
Storage buffer:
PBS only

For technical support and original validation data for this product please contact:

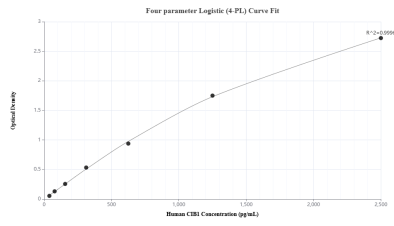
T: 4006900926

E: Proteintech-CN@ptglab.com

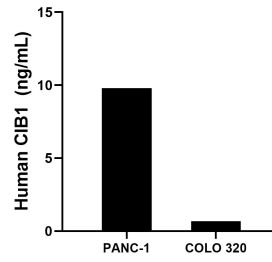
W: ptgcn.com

This product is exclusively available under Proteintech Group brand and is not available to purchase from any other manufacturer.

Selected Validation Data



Sandwich ELISA standard curve of MP03171-2, Human CIB1 Recombinant Matched Antibody Pair - PBS only. 87697-3-PBS was coated to a plate as the capture antibody and incubated with serial dilutions of standard Eg5476. 87697-4-PBS was HRP conjugated as the detection antibody. Range: 39.1-2500 pg/mL



The mean CIB1 concentration was determined to be 9.84 ng/mL in PANC-1 cell extract based on a 1.2 mg/mL extract load and 0.67 ng/mL in COLO 320 cell extract based on a 1.2 mg/mL extract load.