

For Research Use Only

ABCC11/MRP8 Recombinant Matched Antibody Pair, PBS Only



Catalog Number:MP03159-1

Capture Antibody Information

Catalog Number:
87699-2-PBS
Host:
Rabbit
Isotype:
IgG
Purification Method:
Protein A purification

Clone ID:
253118G8
Reactivity:
human
GenBank:
BC039085

Conjugate:
Unconjugated
Full name:
ATP-binding cassette, sub-family C (CFTR/MRP), member 11
Gene ID:
85320

Detection Antibody Information

Catalog Number:
87699-1-PBS
Host:
Rabbit
Isotype:
IgG
Purification Method:
Protein A purification

Clone ID:
253118C9
Reactivity:
human
GenBank:
BC039085

Conjugate:
Unconjugated
Full name:
ATP-binding cassette, sub-family C (CFTR/MRP), member 11
Gene ID:
85320

Applications

Tested Applications:
Cytometric bead array

Range:
0.078-20 ng/mL (Cytometric Bead Array)

Recommended Dilutions:
It is recommended that this reagent should be titrated in each testing system to obtain optimal results.

Product Information

MP03159-1 targets ABCC11/MRP8 in immunoassays as a matched antibody pair. Validated in Cytometric bead array.

Capture antibody: ABCC11 Recombinant monoclonal antibody, PBS Only (Capture) 87699-2-PBS (253118G8). 100 µg. Concentration 1 mg/ml.

Detection antibody: ABCC11 Recombinant monoclonal antibody, PBS Only (Detector) 87699-1-PBS (253118C9). 100 µg. Concentration 1 mg/ml.

Unconjugated rabbit recombinant monoclonal antibody pair in PBS only storage buffer at a concentration of 1 mg/mL, ready for conjugation. Created using Proteintech's proprietary in-house recombinant technology. Recombinant production enables unrivalled batch-to-batch consistency, easy scale-up, and future security of supply.

Matched antibody pairs are designed for use in a variety of assays and platforms that require matched antibody pairs.

Antibody use should be optimized for each application and assay.

Storage

Storage:
Store at -80°C.
The product is shipped with ice packs. Upon receipt, store it immediately at -80°C
Storage buffer:
PBS only

For technical support and original validation data for this product please contact:

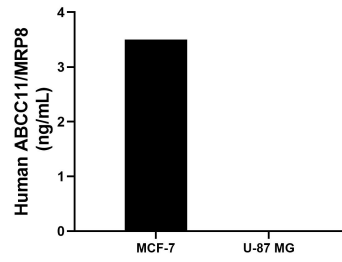
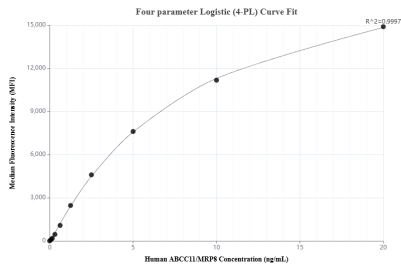
T: 4006900926

E: Proteintech-CN@ptglab.com

W: ptgcn.com

This product is exclusively available under Proteintech Group brand and is not available to purchase from any other manufacturer.

Selected Validation Data



Cytometric bead array standard curve of MP03159-1, ABCC11/MRP8 Recombinant Matched Antibody Pair, PBS Only. Capture antibody: 87699-2-PBS. Detection antibody: 87699-1-PBS. Standard: SY03027. Range: 0.078-20 ng/mL.

The mean ABCC11/MRP8 concentration was determined to be 3.5 ng/mL in MCF-7 cell extract based on a 1.2 mg/mL extract load, U-87 MG cell extract were served as a negative control.