

For Research Use Only

# Mouse CD224/GGT1 Recombinant Matched Antibody Pair, PBS Only



Catalog Number:MP03153-2

## Capture Antibody Information

Catalog Number:  
87659-3-PBS

Host:  
Rabbit

Isotype:  
IgG

Purification Method:  
Protein A purification

Clone ID:  
253090F7

Reactivity:  
mouse

GenBank:  
NM\_001305992.1

Immunogen Catalog Number:  
Eg6301

Conjugate:  
Unconjugated

Full name:  
gamma-glutamyltransferase 1

Gene ID:  
14598

## Detection Antibody Information

Catalog Number:  
87659-2-PBS

Host:  
Rabbit

Isotype:  
IgG

Purification Method:  
Protein A purification

Clone ID:  
253090A12

Reactivity:  
mouse

GenBank:  
NM\_001305992.1

Immunogen Catalog Number:  
Eg6301

Conjugate:  
Unconjugated

Full name:  
gamma-glutamyltransferase 1

Gene ID:  
14598

## Applications

Tested Applications:  
Sandwich ELISA

Range:  
0.39-25 ng/mL (Sandwich ELISA)

Recommended Dilutions:  
It is recommended that this reagent should be titrated in each testing system to obtain optimal results.

## Product Information

MP03153-2 targets CD224/GGT1 in immunoassays as a matched antibody pair. Validated in Sandwich ELISA.

Capture antibody: Mouse CD224/GGT1 Recombinant monoclonal antibody, PBS Only (Capture) 87659-3-PBS (253090F7). 100  $\mu$ g. Concentration 1 mg/mL.

Detection antibody: Mouse CD224/GGT1 Recombinant monoclonal antibody, PBS Only (Detector) 87659-2-PBS (253090A12). 100  $\mu$ g. Concentration 1 mg/mL.

Unconjugated rabbit recombinant monoclonal antibody pair in PBS only storage buffer at a concentration of 1 mg/mL, ready for conjugation. Created using Proteintech's proprietary in-house recombinant technology. Recombinant production enables unrivalled batch-to-batch consistency, easy scale-up, and future security of supply.

Matched antibody pairs are designed for use in a variety of assays and platforms that require matched antibody pairs.

Antibody use should be optimized for each application and assay.

## Storage

Storage:  
Store at -80°C.

The product is shipped with ice packs. Upon receipt, store it immediately at -80°C

Storage buffer:  
PBS only

For technical support and original validation data for this product please contact:

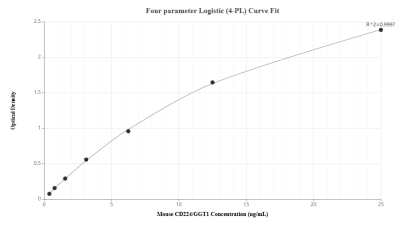
T: 4006900926

E: Proteintech-CN@ptglab.com

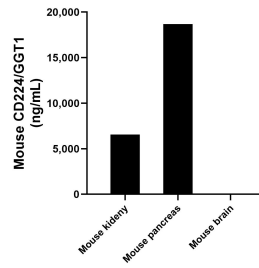
W: ptgcn.com

This product is exclusively available under Proteintech Group brand and is not available to purchase from any other manufacturer.

## Selected Validation Data



Sandwich ELISA standard curve of MP03153-2, Mouse CD224/GGT1 Recombinant Matched Antibody Pair - PBS only. 87659-3-PBS was coated to a plate as the capture antibody and incubated with serial dilutions of standard Eg6301. 87659-2-PBS was HRP conjugated as the detection antibody. Range: 0.39-25 ng/mL



The mean CD224/GGT1 concentration was determined to be 6,546.25 ng/mL in mouse kidney tissue extract based on a 8.4 mg/mL extract load, 18,675.63 ng/mL in mouse pancreas tissue extract based on a 10.6 mg/mL extract load and 6.92 ng/mL in mouse brain tissue extract based on a 8.3 mg/mL extract load.