

For Research Use Only

Mouse CD224/GGT1 Recombinant Matched Antibody Pair, PBS Only



Catalog Number:MP03153-1

Capture Antibody Information

Catalog Number:
87659-3-PBS
Host:
Rabbit
Isotype:
IgG
Purification Method:
Protein A purification

Clone ID:
253090F7
Reactivity:
mouse
GenBank:
NM_001305992.1
Immunogen Catalog Number:
Eg6301

Conjugate:
Unconjugated
Full name:
gamma-glutamyltransferase 1
Gene ID:
14598

Detection Antibody Information

Catalog Number:
87659-1-PBS
Host:
Rabbit
Isotype:
IgG
Purification Method:
Protein A purification

Clone ID:
253090C2
Reactivity:
mouse
GenBank:
NM_001305992.1
Immunogen Catalog Number:
Eg6301

Conjugate:
Unconjugated
Full name:
gamma-glutamyltransferase 1
Gene ID:
14598

Applications

Tested Applications:
Cytometric bead array

Range:
0.781-100 ng/mL (Cytometric Bead Array)

Recommended Dilutions:
It is recommended that this reagent should be titrated in each testing system to obtain optimal results.

Product Information

MP03153-1 targets CD224/GGT1 in immunoassays as a matched antibody pair. Validated in Cytometric bead array.

Capture antibody: Mouse CD224/GGT1 Recombinant monoclonal antibody, PBS Only (Capture) 87659-3-PBS (253090F7). 100 μ g. Concentration 1 mg/mL.

Detection antibody: Mouse CD224/GGT1 Recombinant monoclonal antibody, PBS Only (Detector) 87659-1-PBS (253090C2). 100 μ g. Concentration 1 mg/mL.

Unconjugated rabbit recombinant monoclonal antibody pair in PBS only storage buffer at a concentration of 1 mg/mL, ready for conjugation. Created using Proteintech's proprietary in-house recombinant technology. Recombinant production enables unrivalled batch-to-batch consistency, easy scale-up, and future security of supply.

Matched antibody pairs are designed for use in a variety of assays and platforms that require matched antibody pairs.

Antibody use should be optimized for each application and assay.

Storage

Storage:
Store at -80°C.
The product is shipped with ice packs. Upon receipt, store it immediately at -80°C
Storage buffer:
PBS only

For technical support and original validation data for this product please contact:

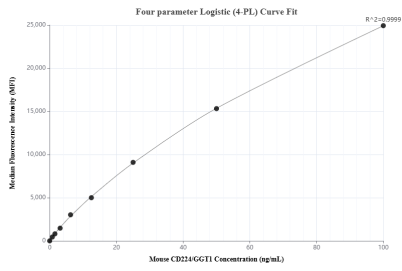
T: 4006900926

E: Proteintech-CN@ptglab.com

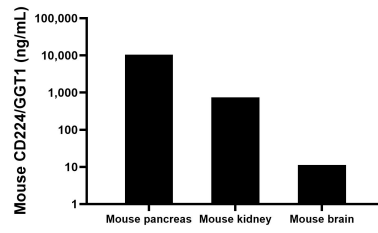
W: ptgcn.com

This product is exclusively available under Proteintech Group brand and is not available to purchase from any other manufacturer.

Selected Validation Data



Cytometric bead array standard curve of MP03153-1, MOUSE CD224/ GGT1 Recombinant Matched Antibody Pair, PBS Only. Capture antibody: 87659-3-PBS. Detection antibody: 87659-1-PBS. Standard: Eg6301. Range: 0.781-100 ng/mL



The mean CD224/ GGT1 concentration was determined to be 10438.8 ng/mL in mouse pancreas tissue extract based on a 10.6 mg/mL extract load, 747.6 ng/mL in mouse kidney tissue extract based on a 7.8 mg/mL extract load, 11.3 ng/mL in mouse brain tissue extract based on a 2.2 mg/mL extract load.