

For Research Use Only

# SPRY4 Recombinant Matched Antibody Pair, PBS Only



Catalog Number:MP03152-1

## Capture Antibody Information

Catalog Number:  
87666-3-PBS

Host:  
Rabbit

Isotype:  
IgG

Purification Method:  
Protein A purification

Clone ID:  
253045B4

Reactivity:  
human

GenBank:  
BC125095

Immunogen Catalog Number:  
Ag18574

Conjugate:  
Unconjugated

Full name:  
sprouty homolog 4 (Drosophila)

Gene ID:  
81848

## Detection Antibody Information

Catalog Number:  
87666-2-PBS

Host:  
Rabbit

Isotype:  
IgG

Purification Method:  
Protein A purification

Clone ID:  
253045F11

Reactivity:  
human

GenBank:  
BC125095

Immunogen Catalog Number:  
Ag18574

Conjugate:  
Unconjugated

Full name:  
sprouty homolog 4 (Drosophila)

Gene ID:  
81848

## Applications

Tested Applications:  
Cytometric bead array

Range:  
0.156-20 ng/mL (Cytometric Bead Array)

Recommended Dilutions:  
It is recommended that this reagent should be titrated in each testing system to obtain optimal results.

## Product Information

MP03152-1 targets SPRY4 in immunoassays as a matched antibody pair. Validated in Cytometric bead array.

Capture antibody: SPRY4 Recombinant monoclonal antibody, PBS Only (Capture) 87666-3-PBS (253045B4). 100  $\mu$ g. Concentration 1 mg/mL.

Detection antibody: SPRY4 Recombinant monoclonal antibody, PBS Only (Detector) 87666-2-PBS (253045F11). 100  $\mu$ g. Concentration 1 mg/mL.

Unconjugated rabbit recombinant monoclonal antibody pair in PBS only storage buffer at a concentration of 1 mg/mL, ready for conjugation. Created using Proteintech's proprietary in-house recombinant technology. Recombinant production enables unrivalled batch-to-batch consistency, easy scale-up, and future security of supply.

Matched antibody pairs are designed for use in a variety of assays and platforms that require matched antibody pairs.

Antibody use should be optimized for each application and assay.

## Storage

Storage:  
Store at -80°C.

The product is shipped with ice packs. Upon receipt, store it immediately at -80°C

Storage buffer:  
PBS only

For technical support and original validation data for this product please contact:

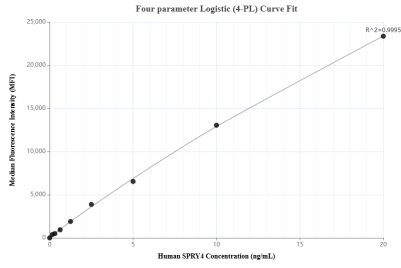
T: 4006900926

E: Proteintech-CN@ptglab.com

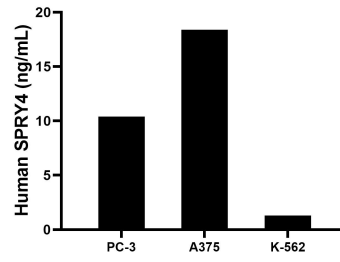
W: ptgcn.com

This product is exclusively available under Proteintech Group brand and is not available to purchase from any other manufacturer.

## Selected Validation Data



Cytometric bead array standard curve of MP03152-1, SPRY4 Recombinant Matched Antibody Pair, PBS Only. Capture antibody: 87666-3-PBS. Detection antibody: 87666-2-PBS. Standard: Ag18574. Range: 0.156-20 ng/mL



The mean SPRY4 concentration was determined to be 10.4 ng/mL in PC-3 cell extract based on a 1.2 mg/mL extract load, 18.4 ng/mL in A375 cell extract based on a 1.6 mg/mL extract load, 1.3 ng/mL in K-562 cell extract based on a 1.2 mg/mL extract load.