

Mouse LYVE-1 Recombinant Matched Antibody Pair, PBS Only

Catalog Number:MP03135-1

Capture Antibody Information

Catalog Number: 87635-3-PBS	Clone ID: 252928B2	Conjugate: Unconjugated
Host: Rabbit	Reactivity: mouse	Full name: lymphatic vessel endothelial hyaluronan receptor 1
Isotype: IgG	GenBank: NM_053247.4	Gene ID: 114332
Purification Method: Protein A purification	Immunogen Catalog Number: Eg6367	

Detection Antibody Information

Catalog Number: 87635-2-PBS	Clone ID: 252928H2	Conjugate: Unconjugated
Host: Rabbit	Reactivity: mouse	Full name: lymphatic vessel endothelial hyaluronan receptor 1
Isotype: IgG	GenBank: NM_053247.4	Gene ID: 114332
Purification Method: Protein A purification	Immunogen Catalog Number: Eg6367	

Applications

Tested Applications: Cytometric bead array	Range: 0.469-30 ng/mL (Cytometric Bead Array)	Recommended Dilutions: It is recommended that this reagent should be titrated in each testing system to obtain optimal results.
--	---	---

Product Information

MP03135-1 targets LYVE-1 in immunoassays as a matched antibody pair. Validated in Cytometric bead array.

Capture antibody: Mouse LyVE-1 Recombinant monoclonal antibody, PBS Only (Capture) 87635-3-PBS (252928B2). 100 µg. Concentration 1 mg/mL.

Detection antibody: Mouse LyVE-1 Recombinant monoclonal antibody, PBS Only (Detector) 87635-2-PBS (252928H2). 100 µg. Concentration 1 mg/mL.

Unconjugated rabbit recombinant monoclonal antibody pair in PBS only storage buffer at a concentration of 1 mg/mL, ready for conjugation. Created using Proteintech's proprietary in-house recombinant technology. Recombinant production enables unrivalled batch-to-batch consistency, easy scale-up, and future security of supply.

Matched antibody pairs are designed for use in a variety of assays and platforms that require matched antibody pairs.

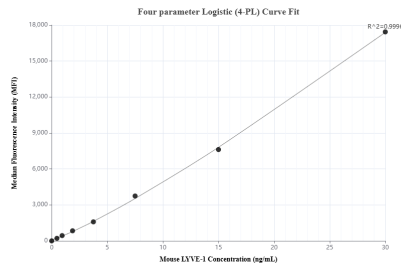
Antibody use should be optimized for each application and assay.

Storage

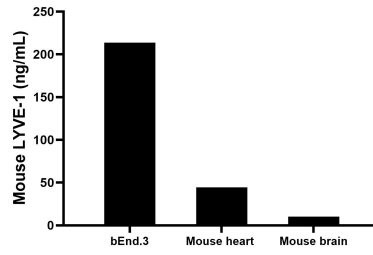
Storage:
Store at -80°C.
The product is shipped with ice packs. Upon receipt, store it immediately at -80°C

Storage buffer:
PBS only

Selected Validation Data



Cytometric bead array standard curve of MP03135-1, MOUSE LYVE-1 Recombinant Matched Antibody Pair, PBS Only. Capture antibody: 87635-3-PBS. Detection antibody: 87635-2-PBS. Standard: Eg6367. Range: 0.469-30 ng/mL



The mean LYVE-1 concentration was determined to be 213.6 ng/mL in bEnd.3 cell extract based on a 1.2 mg/mL extract load, 44.3 ng/mL in mouse heart tissue extract based on a 5.4 mg/mL extract load, 10.4 ng/mL in mouse brain tissue extract based on a 2.2 mg/mL extract load.