

For Research Use Only

ZNF207 Recombinant Matched Antibody Pair, PBS Only



Catalog Number:MP03134-2

Capture Antibody Information

Catalog Number:
87649-4-PBS

Host:
Rabbit

Isotype:
IgG

Purification Method:
Protein A purification

Clone ID:
253049C4

Reactivity:
human

GenBank:
BC002372

Immunogen Catalog Number:
Ag40360

Conjugate:
Unconjugated

Full name:
zinc finger protein 207

Gene ID:
7756

Detection Antibody Information

Catalog Number:
87649-3-PBS

Host:
Rabbit

Isotype:
IgG

Purification Method:
Protein A purification

Clone ID:
253049E6

Reactivity:
human

GenBank:
BC002372

Immunogen Catalog Number:
Ag40360

Conjugate:
Unconjugated

Full name:
zinc finger protein 207

Gene ID:
7756

Applications

Tested Applications:
Sandwich ELISA

Range:
78.1-5000 pg/mL (Sandwich ELISA)

Recommended Dilutions:
It is recommended that this reagent should be titrated in each testing system to obtain optimal results.

Product Information

MP03134-2 targets ZNF207 in immunoassays as a matched antibody pair. Validated in Sandwich ELISA.

Capture antibody: ZNF207 Recombinant monoclonal antibody, PBS Only (Capture) 87649-4-PBS (253049C4). 100 μ g. Concentration 1 mg/mL.

Detection antibody: ZNF207 Recombinant monoclonal antibody, PBS Only (Capture/Detector) 87649-3-PBS (253049E6). 100 μ g. Concentration 1 mg/mL.

Unconjugated rabbit recombinant monoclonal antibody pair in PBS only storage buffer at a concentration of 1 mg/mL, ready for conjugation. Created using Proteintech's proprietary in-house recombinant technology. Recombinant production enables unrivalled batch-to-batch consistency, easy scale-up, and future security of supply.

Matched antibody pairs are designed for use in a variety of assays and platforms that require matched antibody pairs.

Antibody use should be optimized for each application and assay.

Storage

Storage:
Store at -80°C.

The product is shipped with ice packs. Upon receipt, store it immediately at -80°C

Storage buffer:
PBS only

For technical support and original validation data for this product please contact:

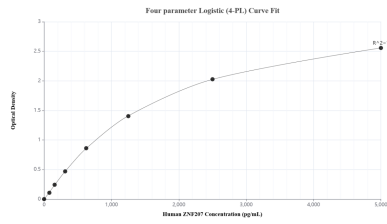
T: 4006900926

E: Proteintech-CN@ptglab.com

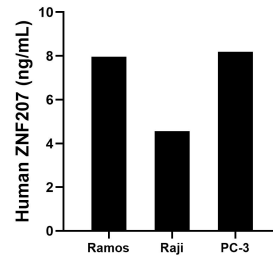
W: ptgcn.com

This product is exclusively available under Proteintech Group brand and is not available to purchase from any other manufacturer.

Selected Validation Data



Sandwich ELISA standard curve of MP03134-2, Human ZNF207 Recombinant Matched Antibody Pair - PBS only. 87649-4-PBS was coated to a plate as the capture antibody and incubated with serial dilutions of standard Ag40360. 87649-3-PBS was HRP conjugated as the detection antibody. Range: 78.1-5000 pg/mL



The mean ZNF207 concentration was determined to be 8.0 ng/mL in Ramos cell extract based on a 1.5 mg/mL extract load, 4.6 ng/mL in Raji cell extract based on a 1.2 mg/mL extract load and 8.2 ng/mL in PC-3 cell extract based on a 1.5 mg/mL extract load.