

For Research Use Only

Mouse BCRP/ABCG2 Recombinant Matched Antibody Pair, PBS Only



Catalog Number:MP03130-1

Capture Antibody Information

Catalog Number:

87614-3-PBS

Host:

Rabbit

Isotype:

IgG

Purification Method:

Protein A purification

Clone ID:

252770C9

Reactivity:

mouse

GenBank:

BC053730

Conjugate:

Unconjugated

Full name:

ATP-binding cassette, sub-family G (WHITE), member 2

Gene ID:

26357

Detection Antibody Information

Catalog Number:

87614-2-PBS

Host:

Rabbit

Isotype:

IgG

Purification Method:

Protein A purification

Clone ID:

252770G12

Reactivity:

mouse

GenBank:

BC053730

Conjugate:

Unconjugated

Full name:

ATP-binding cassette, sub-family G (WHITE), member 2

Gene ID:

26357

Applications

Tested Applications:

Cytometric bead array

Range:

0.156-20 ng/mL (Cytometric Bead Array)

Recommended Dilutions:

It is recommended that this reagent should be titrated in each testing system to obtain optimal results.

Product Information

MP03130-1 targets BCRP/ABCG2 in immunoassays as a matched antibody pair. Validated in Cytometric bead array.

Capture antibody: Mouse Abcg2 Recombinant monoclonal antibody, PBS Only (Capture) 87614-3-PBS (252770C9). 100 μ g. Concentration 1 mg/ml.

Detection antibody: Mouse Abcg2 Recombinant monoclonal antibody, PBS Only (Detector) 87614-2-PBS (252770G12). 100 μ g. Concentration 1 mg/ml.

Unconjugated rabbit recombinant monoclonal antibody pair in PBS only storage buffer at a concentration of 1 mg/mL, ready for conjugation. Created using Proteintech's proprietary in-house recombinant technology. Recombinant production enables unrivalled batch-to-batch consistency, easy scale-up, and future security of supply.

Matched antibody pairs are designed for use in a variety of assays and platforms that require matched antibody pairs.

Antibody use should be optimized for each application and assay.

Storage

Storage:

Store at -80°C.

The product is shipped with ice packs. Upon receipt, store it immediately at -80°C

Storage buffer:

PBS only

For technical support and original validation data for this product please contact:

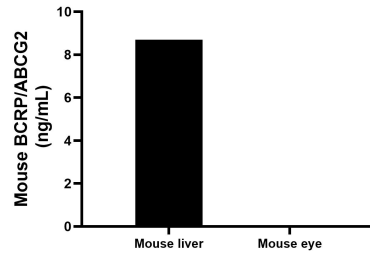
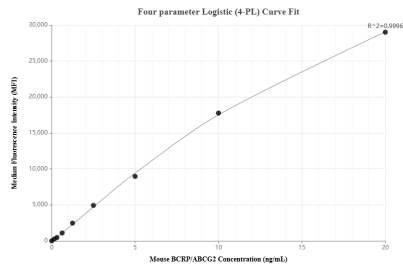
T: 4006900926

E: Proteintech-CN@ptglab.com

W: ptgcn.com

This product is exclusively available under Proteintech Group brand and is not available to purchase from any other manufacturer.

Selected Validation Data



Cytometric bead array standard curve of MP03130-1, MOUSE BCRP/ABCG2 Recombinant Matched Antibody Pair, PBS Only. Capture antibody: 87614-3-PBS. Detection antibody: 87614-2-PBS. Standard: SY02955. Range: 0.156-20 ng/mL

The mean BCRP/ABCG2 concentration was determined to be 8.7 ng/mL in mouse liver tissue extract based on a 8.4 mg/mL extract load, mouse eye tissue extract were served as a negative control.